

GEODESIGN SPECIALIZATION

B.S. IN SUSTAINABILITY AND THE BUILT ENVIRONMENT

WHY GEODESIGN:

'Geodesign' is the application of mapping technologies and other tools to assess the built environment and design solutions for the future. If you're interested in **problem solving** and using **technology** to design a more sustainable world, contact patricde@dcp.ufl.edu.

Skills You'll Gain:

- ✓ Proficiency with spatial mapping software
- ✓ Python Scripting
- ✓ Data Modeling
- ✓ How spatial data influence decisions
- ✓ Knowledge in Data Science

Jobs in Geodesign:

- ✓ City Planning and Local Governments
- ✓ Design Firms
- ✓ Engineering Firms
- ✓ Consulting and Corporations
- ✓ Risk mitigation and planning
- ✓ Community Development

For more information:

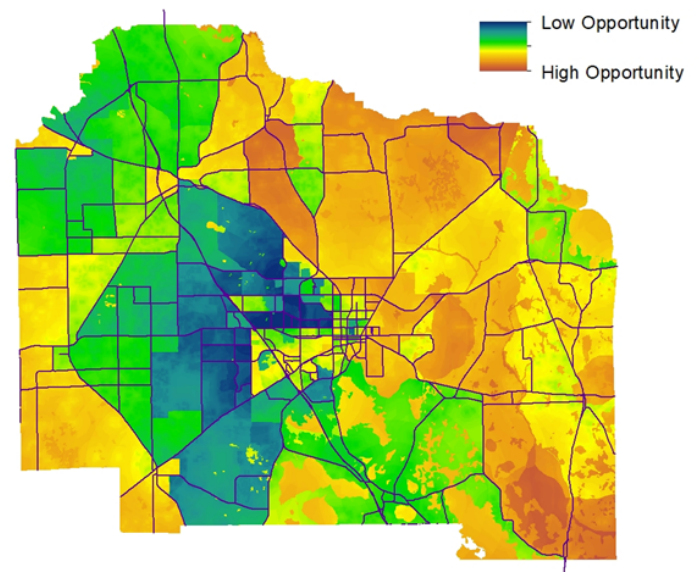
Bahar Armaghani, barmagh@ufl.edu

Sustainability and the Built Environment Program
Director

Or visit : dcp.ufl.edu/sustainability

Coursework:

Geodesign students integrate technology and data science to make sustainable decisions for communities, corporations, and nonprofits. Coursework includes several hands-on experiences where students collaboratively build solutions and apply them in energy, natural systems, to improve livability, and business.



The College of Design, Construction, and Planning

The mission of our college is to improve the quality of the built and natural environments through offering exceptional educational and professional programs and research/scholarship initiatives that address the planning, design, construction, and preservation of the built and natural environments.

SUSTAINABILITY & THE BUILT ENVIRONMENT

Geodesign Specialization

120 Credit Hour Program

First Year Fall

BCN 1582 Int. Sustain Dev.
3 credits (GE S/B & N)

LAA 2330 Site Analysis
3 Credits

MAC1147 Precalculus Math (State GE-M) OR
MAC1140 Precalculus Algebra
and MAC1114 Trigonometry
3-4 credits (GE-M)

DCP1003 Creating Our Built Environment
1 credit

DCP1010 Geodesign Colloquium
1 credit

First Year Spring

ECO 2023 Microeconomics
4 Credits (GE-S/B)

Select from History of Built Env.*
3 Credits (GE-H & N)

DCP 1241 Intro to Spatial Thinking
3 credits

Second Year Fall

ECO 2013 Macroeconomics
4 Credits (State GE-S/B)

STA 2023 Intro to Statistics I
3 credits (GE-M)

DCP 2001 Intro to GIS I
3 credits

GEO 2200 Physical Geography
3 credits (GE-P)

Second Year Spring

ENC 3254 Writing for Design and Planning
3 Credits (State GE-C)

DCP 2002 Intro to GIS II
3 credits

Select from Resource Economics*
3 Credits

Third Year Fall

DCP 3210 Sustainable Solutions
3 Credits

Select from Ethics and/or Env. Justice*
3 Credits

URP 4230 3D, Modeling, Visualization, & Simulation
3 credits

GEO3162C Intro to Quantitative Analysis for Geographers
4 credits

DCP 4942 Field Experience
3 credits

Third Year Spring

DCP 3220 Social & Cultural Sustainability
3 Credits

Select from Ecology & Built Env.*
3 Credits

DCP 4930 Economics of Sustainability & the Built Environment
3 credits

DCP 4930 ModelBuilder/Python
3 credits

Fourth Year Fall

DCP 4945 Geodesign Practicum I
5 credits

DCP 3200 Methods of Inquiry
3 Credits

Fourth Year Spring

DCP 4290 Geodesign Capstone Project
6 Credits

DCP 4942 Field Experience
3 credits

Courses that students need to complete in addition to the required courses:

State Humanities (GE-H) - 3 credits

State Biological/Physical Science (GE-P/B) - 3 credits

IDS 1161 or IDS 2935 What is the Good Life or Special Topics (GE-H)- 3 credits

Composition (GE-C) - 3 credits

University writing requirement: 24,000 words

Lower division electives- 4 credits- Any 1000-2000 level course at UF

Upper division electives- 6 credits- Any 3000 or 4000 level course at UF

Approved electives- 15 credits *Select from DCP elective courses

*Please refer to the undergraduate catalog for further details