

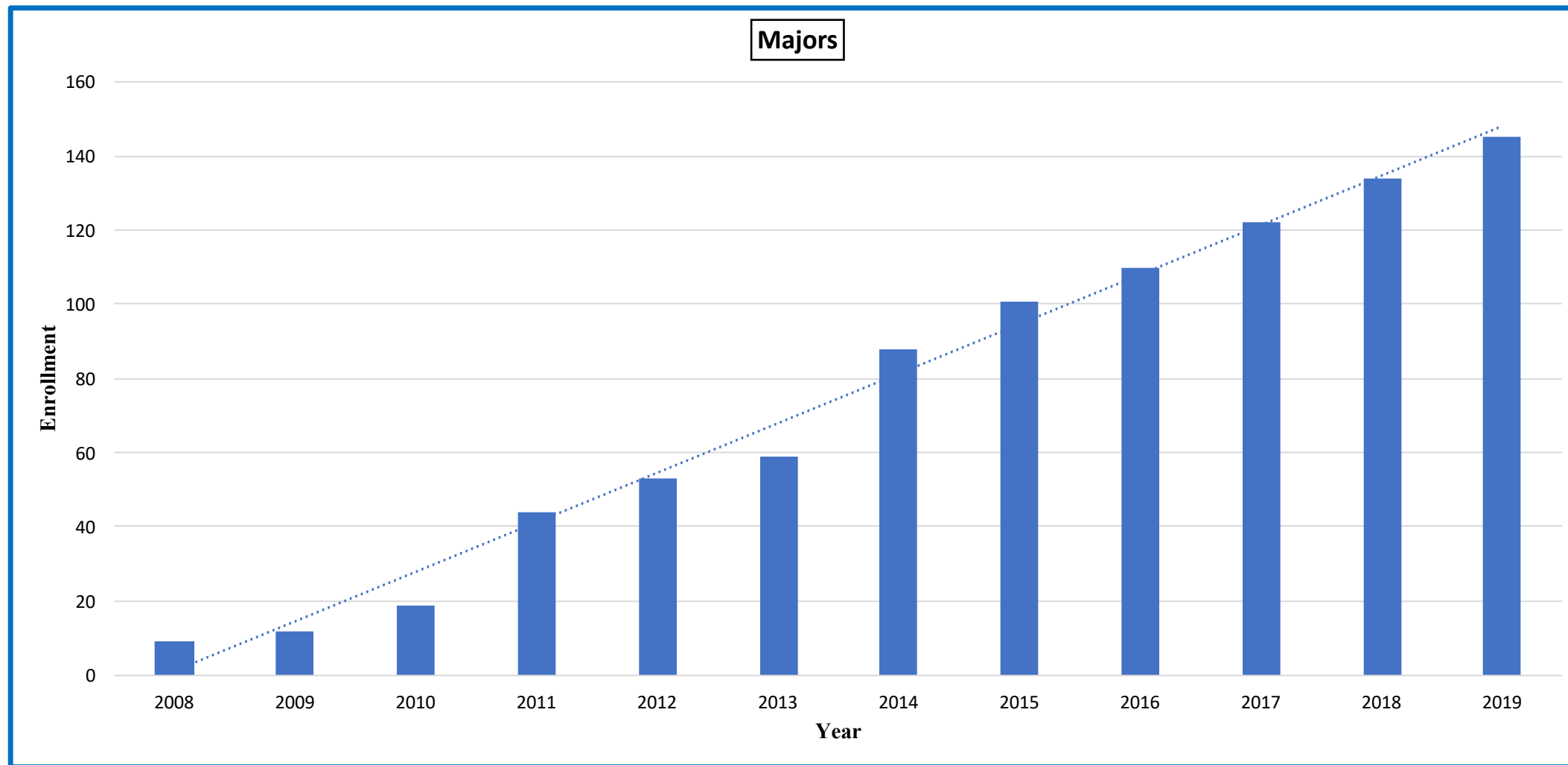
# Sustainability and the Built Environment (SBE)

*College of Design, Construction and Planning*

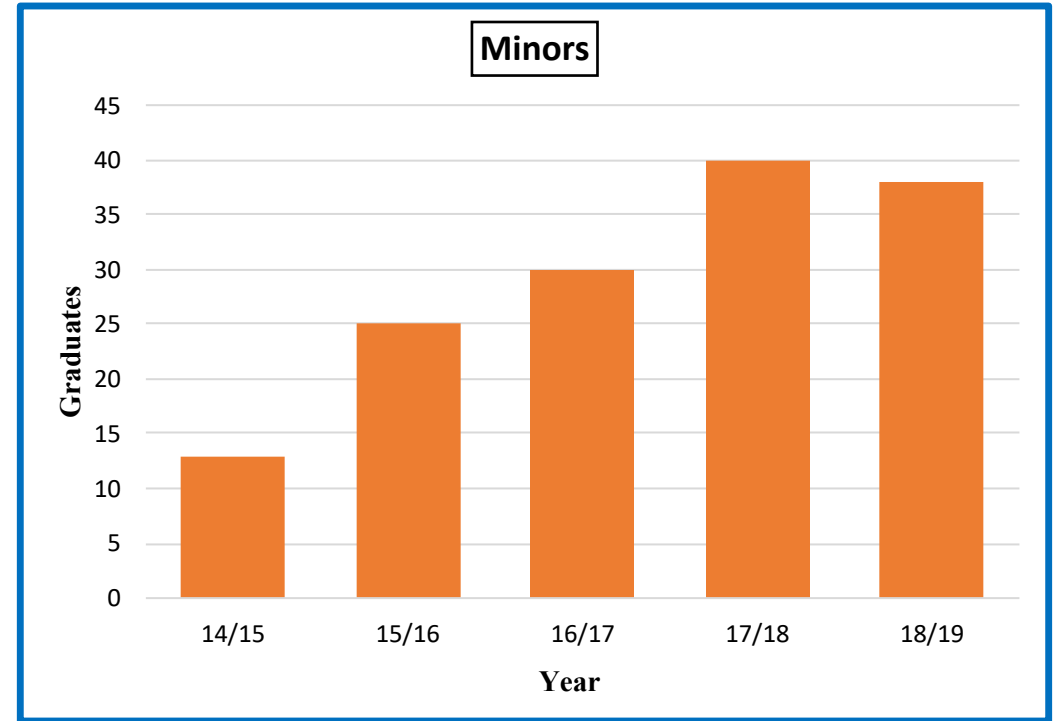
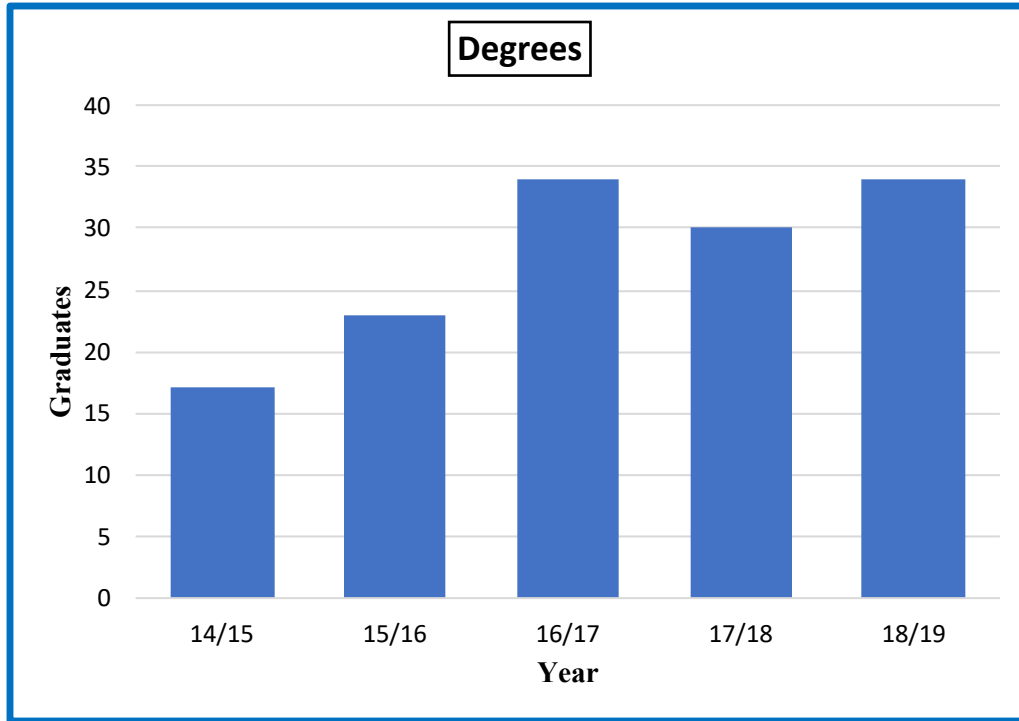




# SBE by the Numbers



# SBE by the Numbers



138 Total Graduates

- (20%) have completed or are entering one of the three combined degree programs (MHP, MURP & MLA)

146 Total earned minor in SBE

# Our Curriculum

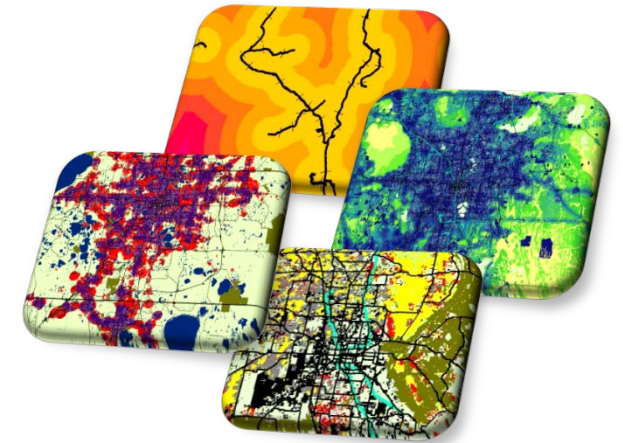
**For Majors:** 120 Credit Hours - 2 Specialization

- **STEM & Interdisciplinary**
- **Geodesign**

**For Minors:** 15 Credit Hours

**Combined Degrees (Masters):**

- Historic Preservation (4+1)
- Urban & Regional Planning (4+1)
- Landscape Architecture (4+2)
- Coming fall of 2020, Integrated Sustainable Development (4+1)



# Interdisciplinary Specialization

- Understand strategies to design and build green;
- Learning principles of resilience thinking and practice;
- Evaluating multiscale spatial and temporal interactions and adaptive management strategies;
- Discovering the dynamics of complex systems;

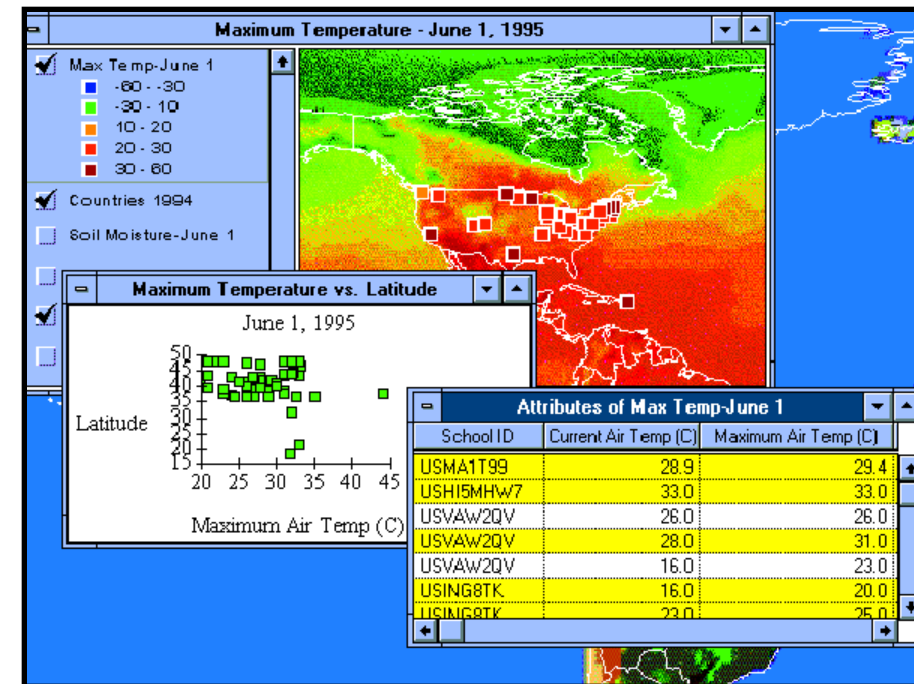
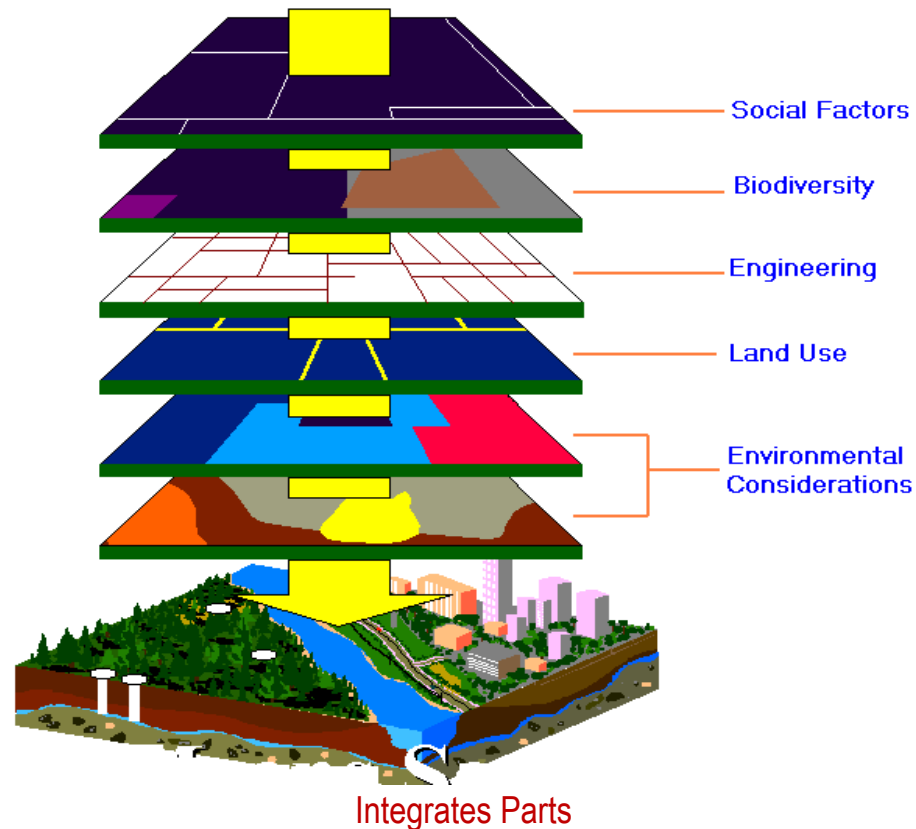




# Geodesign Specialization

## GIS – Geospatial Information Science

A computerized system that conducts geographic analysis of territories and places above and under the surface of the earth.



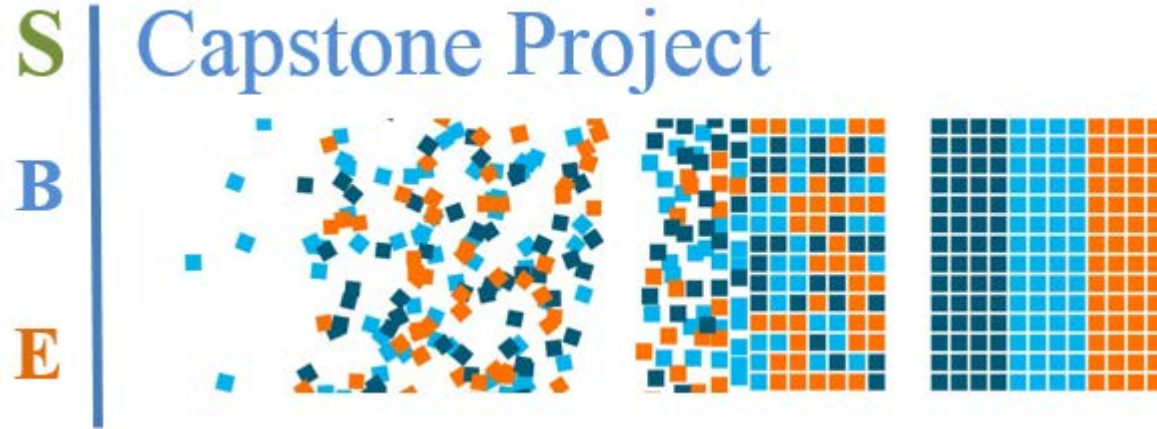
Visual Language



# Field Trips







The Sustainability and the Built Environment (SBE) Program views mentored Under Graduate Research /Capstone Projects as the most effective way to bring out the passion and innovation in our students on their preferred topic using the tools, skills and knowledge earned throughout their college career with us.

The capstone project is a celebration of sorts and culminating experiences to deliver a polished product that showcases students' abilities and readiness for the job market.

- Exceptional faculty and industry leaders
- Developed list of potential mentors





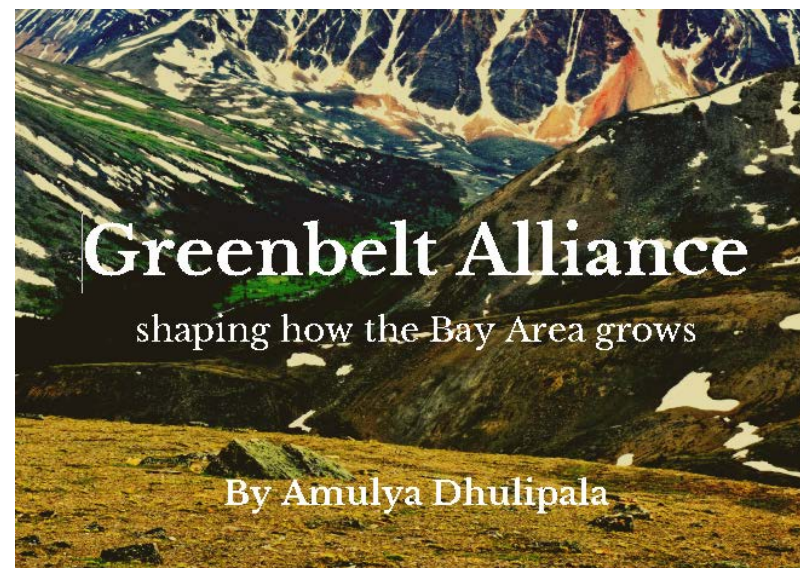
# Field Experience, Internships



## S | FIELD EXPERIENCE

B | It's Your Career, So Develop It.

E |





# Study abroad:

- Netherlands
- Hispaniola
- Iceland
- Australia

The poster features a background image of a historic building in Groningen, the Netherlands. The University of Groningen logo is in the top left. The main title is 'University of Groningen Summer Schools 2016'. Below it, the specific program is 'Society, Environment, Transportation and Space'. A subtitle reads 'Understanding Water Management and Sustainable Transportation in the context of Urban Planning in the Netherlands'. The dates '23 May – 18 June 2016' and location 'Groningen, the Netherlands' are at the bottom.

university of groningen

## University of Groningen Summer Schools 2016

### Society, Environment, Transportation and Space

*Understanding Water Management and Sustainable Transportation in the context of Urban Planning in the Netherlands*

23 May – 18 June 2016  
Groningen, the Netherlands

The banner has a background of palm trees on a beach. The title 'UF in Hispaniola' is in large white letters. Below it, the subtitle 'Sustainability, Resiliency & Social Justice' and the dates 'Summer A: May 9 - June 4, 2016' are in smaller white text.

## UF in Hispaniola

Sustainability, Resiliency & Social Justice | Summer A: May 9 - June 4, 2016

### COLLEGE INFORMATION

College of Design, Construction & Planning

### PROGRAM

UF in Hispaniola is an interdisciplinary opportunity to work in two very different yet related contexts on opposite ends of the island. In Haiti, you will work alongside Restavek Freedom Foundation in Port Salut with local engagement teams to consider more innovative, engaging and technology-based methods for collecting community-based information. In the Dominican Republic, you will work alongside the Punta Cana Ecological Foundation investigating

**WORK** with established on-ground partners and their extensive local networks in local communities

**NETWORK** in two diverse contexts in the Caribbean

**GAIN** comparative international field experience in two very different, yet related contexts in Hispaniola

**BUILD** skills and capacities necessary for working internationally today and in the future through an interdisciplinary project-based experience

## SUSTAINABILITY, RESILIENCY & SOCIAL JUSTICE

Summer A: May 9 - June 4, 2016

### APPLICATION INFORMATION

2016 Application Deadline: **March 18, 2016**

Please apply online at: [www.ufic.ufl.edu/sas](http://www.ufic.ufl.edu/sas)

### ELIGIBILITY | REQUIREMENTS

- Open to all majors
- 2.5 GPA or higher
- Skype meeting with Faculty Director





# UF Green Building Learning Collaborative (GBLC)

## Mission:

To create a learning collaborative for students, faculty and industry to foster sustainability leadership and stewardship through participation in applied projects that address sustainability through the planning, design, construction, and operation of green buildings.

## Goals:

1. To provide students the opportunity to participate in applied sustainability projects focused on green buildings.
2. To allow for student mentoring by industry partners.
3. To develop marketable skills through hands on experience for the green job market.
4. To promote leadership in sustainability and the built environment.





# Experiance and Employment

## Internships:

- Siemens
- TLC Engineering for Architecture
- Skanska
- Philip Habib and Associates
- Walker Architects
- Little John Enginnering Inc.
- Community weatherization Coalition
- Seed Biotech, Inc
- School Board of Alachua County
- Power Production Management INC.
- Ever Green Construction
- Waste Management, Seattle Washington
- City of Gainesville
- Shands Hospital
- Regional Transit System, City of Gainesville
- UF Office of sustainability
- Sarasota County's Planning and Services department
- City of Newberry
- Florida Crystals, sugar mill
- Pinellas County

## Careers/Employers

- Siemens
- Holder Construction
- Skanska
- Cosentini Associates
- CBRE, CB Richard Ellise
- Power Production Management, INC.
- Atlantic Design & Construction
- Epsten Group, Inc.
- ecoPreserve
- SEQUIL Systems Inc.
- Modernized Mobile LLC
- Accenture
- Toro Engineering & Construction Corp.
- Legacy Vacation Club
- Kittelson & Associates, Inc.
- Tindale Oliver
- CTS Engineering, Inc.

# Contact us:

## **Pat De Jong**

Assistant Director, Academic Advising  
(352) 294-1400, [patricde@dcp.ufl.edu](mailto:patricde@dcp.ufl.edu)

## **Bahar Armaghani, LEED Fellow**

Director, Sustainability and the Built Environment, and Lecturer  
Director, UF Green Building Learning Collaborative  
(352) 294-1428, [barmagh@ufl.edu](mailto:barmagh@ufl.edu)