

Master of Interior Design

Designer Research Track

First Year

FALL (10 cr)

IND 5633 Readings in Design Studies (3 cr)

IND 5937 IND Colloquium (1 cr)

Graduate Elective OR Advanced IND (3 cr)

Graduate Elective OR Advanced IND (3 cr)

SPRING (10 cr)

IND 5641 Environmental Behavior Studies (3 cr)

IND 6639 Design Research Methods (3 cr)

IND 5937 IND Colloquium (1 cr)

Graduate Elective OR Advanced IND (3 cr)

Second Year

FALL (10 cr)

IND 6940 Supervised Teaching (3 cr)

IND 5937 IND Colloquium (1 cr)

IND 6906 Independent Studies (3 cr)

Graduate Elective OR Advanced IND (3 cr)

SPRING (6 CR)

IND 6971 Research for Master's Thesis (6 cr)

36 Graduate Credits Total

Required Specified Courses: 21 Credits

Additional Courses: 15 credits

*See reverse side for those who come from a non-interiors or architecture background.

All research track students must complete an approved research study and a written thesis.

Program Overview

The Master's of Interior Design (MID) program prepares students for careers in MANY areas of the Interior Design profession. Master's degrees allow for specialization in particular areas of design, and open the doors to other opportunities. UF's interior design program is recognized as a leading program in the U.S and has a strong international draw. Our MID prepares students to become design practitioners with a focus on the intersection of research and practice. In addition to coursework, the main requirement for the degree is a written thesis, as students start to become contributors to the profession's body of knowledge..

A Track to Meet Your Needs

1. DESIGNER TRACK [for students with a CIDA (Interior Design) accredited bachelor's degree]

-2 years

2. NOT YET A DESIGNER TRACK [for students without a previous Interior Design or Architecture bachelor's degree]

-Approximately 3 years

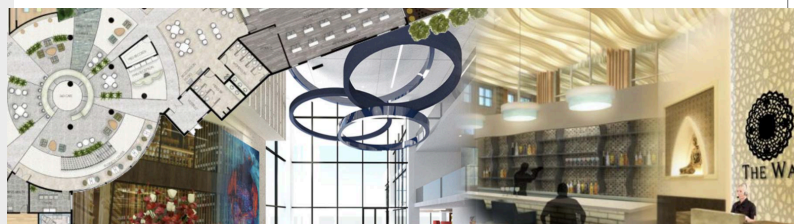
-Leveling courses needed to complete the program do not count toward the 36 hour graduate credit requirement

3. 4+1 COMBINATION DEGREE [for UF Interior Design Students continuing to the Master's degree program]

-Expect one additional year to complete the MID

Faculty Research Areas for Faculty Mentors

- Healthcare & Quality of Life
- Improving Teaching & Learning Outcomes
- Enhancing Creative Performance
- Design Thinking & Pedagogy
- Environmental & Social Sustainability & Resiliency
- Engineering Psychology / Human Factors
- Luminous Environments



Not Yet a Designer Track

First Year

FALL (13 cr)

ARC 1301 Foundations of Architecture (4 cr)
IND 2313 IND Communication Systems (3 cr)
IND 5466 Interior Environmental Technologies (3 cr)
Graduate Elective or Advanced IND Course (3 cr)

SPRING (13 cr)

IND 2214 Intro to Architectural Interiors (4 cr)
IND 2460C Computer Applications in 3D Design (3 cr)
IND 2130 History of Interior Design II (3 cr)
IND 5641 Environmental Behavior Studies (3 cr)

Second Year

FALL (16 cr)

IND 5212C Architectural Interiors I (5 cr)
IND 5427C Interior Design Construction Documents (4 cr)
IND 2422 Interior Finishes & Materials (3 cr)
IND 5633 Readings in Design Studies (3 cr)
IND 5937 IND Colloquium (1 cr)

SPRING (15 cr)

IND 5231C Architectural Interiors II (5 cr)
IND 5434C Interior Lighting (3 cr)
ND 5508 Business & Professional Practices for Interior Design (3 cr)
IND 5937 IND Colloquium (1 cr)
IND 6639 Design Research Methods (3 cr)

SUMMER (3 cr)

IND 6941 Design Field Experience (3 cr)

Third Year

FALL (10 cr)

IND 6906 Independent Study Design Exploration (3 cr)
IND 5937 IND Colloquium (1 cr)
Graduate Elective or Independent Study (3 cr)
Graduate Elective or Independent Study (3 cr)
Optional- IND 5227C Advanced Interiors 1 (5 cr)

SPRING (9 cr)

IND 6971 Research for Master's Thesis (6 cr)
IND 6940 Supervised Teaching (3 cr)

36 Graduate Credits Total + 43 leveling credits

Specific Required Courses: 24 Credits
Additional Required Courses: 12 credits

Students Without a Previous Design Degree

Many of our graduate students come from non-design backgrounds. The track for this group will take approximately 3 years to complete. Each student entering the Master's in Interior Design program works with the graduate program coordinator to evaluate the student's unique background and interests in order to determine the specific courses needed. Leveling undergraduate courses are often required to prepare the student for the profession, in addition to the MID 36 hours of graduate course work. The length of study time varies according to each student's individual previous experience.

For students with a bachelor's degree in a field other than design, the course of study is estimated to be 79 undergraduate and graduate credit hours (see left).

Combination Degree for UF IND Students

If approved, these upper-level undergraduate students can start taking graduate courses during their senior year and can complete their MID after one year of graduate studies and completion of an approved thesis.

FOR MORE INFORMATION ABOUT OUR PROGRAM

<https://dcp.ufl.edu/interior/masters-in-interior-design/>