

**ANGELINA GAYRINA**

University of Florida

*Expected Graduation Date: 2022*



# ■ TABLE OF CONTENTS

1



HOSPITALITY

2



CORPORATE OFFICE

3



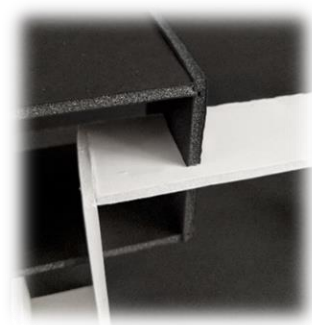
RETAIL

4



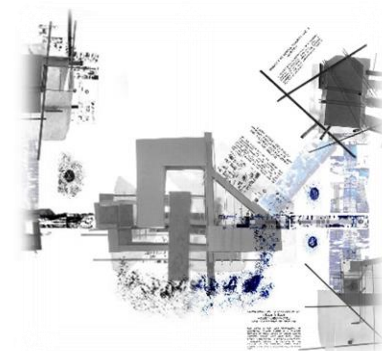
BRANDING

5



FURNITURE DESIGN

6



FUNDAMENTALS

LOBBY

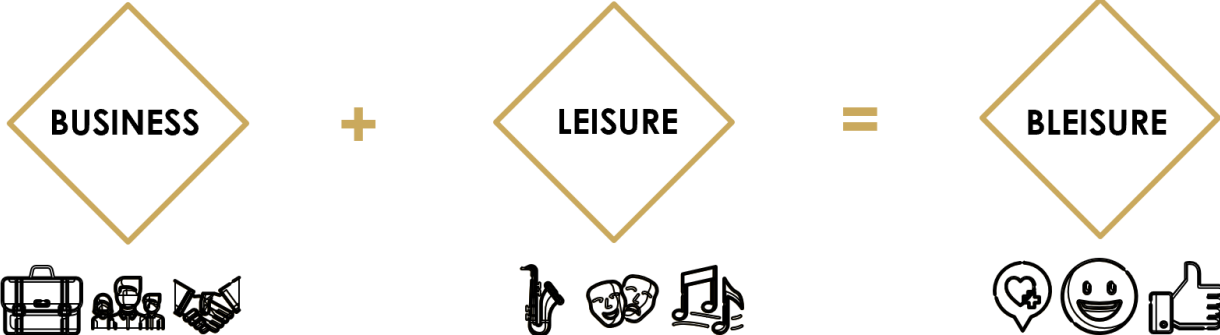


# HART: Concept Statement

# HART

*Hart*™ – a hotel that welcomes ‘bleisure’ type of travelers with an atmosphere inspired by *“Chicago”, the musical* based in the 1920s and that was named after the last name of the main character – Roxie Hart.

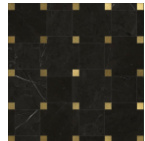
The hotel hopes to attract international business oriented and entertainment lovers in the hope to provide the best experience of the combination of business and leisure in one place.



Project:  
 Boutique Hotel  
 Time Frame  
 Senior Year, Spring 2020 – 12 weeks  
 Square Footage:  
 2,500 sq. ft per floor  
 Location:  
 Chicago, IL

Programs:  
 Autodesk Revit + Enscape + Adobe Photoshop

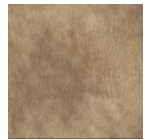
# LOBBY



Harper Porcelain and Metal Mosaic Tile



Red Velvet



Beige Leather



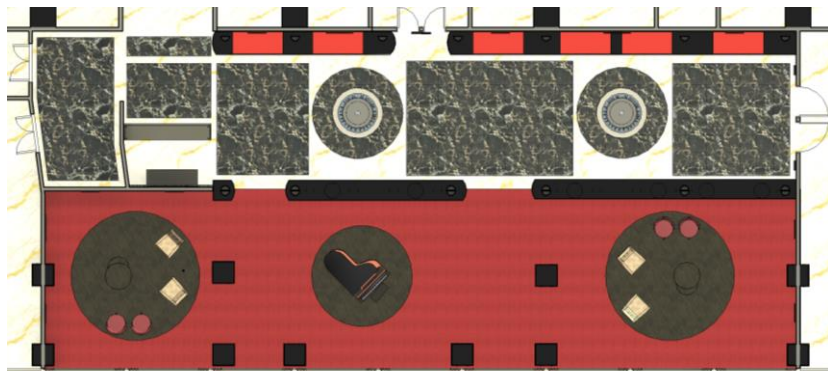
White Gold Marble



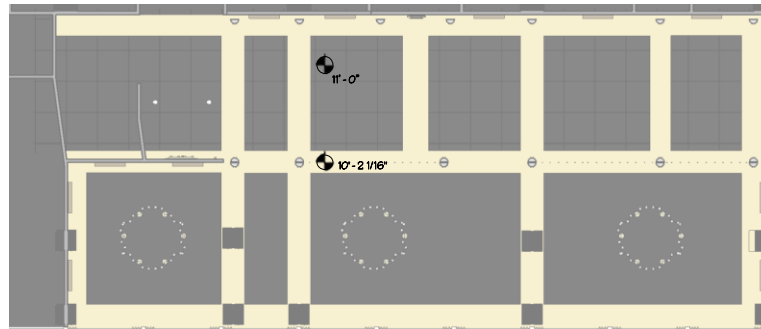
Black Red Gold Striped Wallpaper



Portoro Black Marble

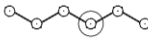




Lobby Floor Plan



Lobby RCP

### Lighting Legend

-  Pendant Light Kohler I Damask
-  Pendant Light Vibia I Algorithm
-  Elesi Luce I Imperium

"Wall of Fame" – Chicago the musical inspired wall, includes scene pictures from the movie itself

## RHYTHM

- movement
- excitement
- entertainment



## SOPHISTICATION

- class
- value
- symmetry



## MOODY

- dimmed light
- intimate/private spaces
- night life



Floors 12-16:  
Mix of Luxury  
& Standard Rooms

Floor 11:

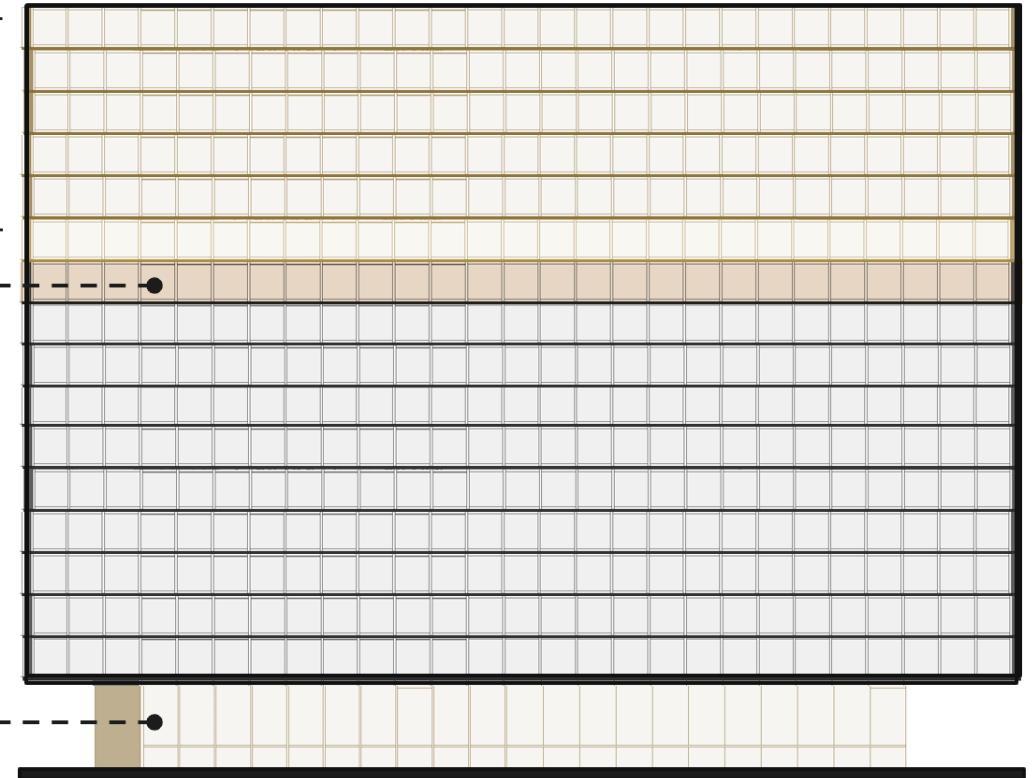
Reception

Conference Rooms

Boutique

Restaurant & Theatrical Stage

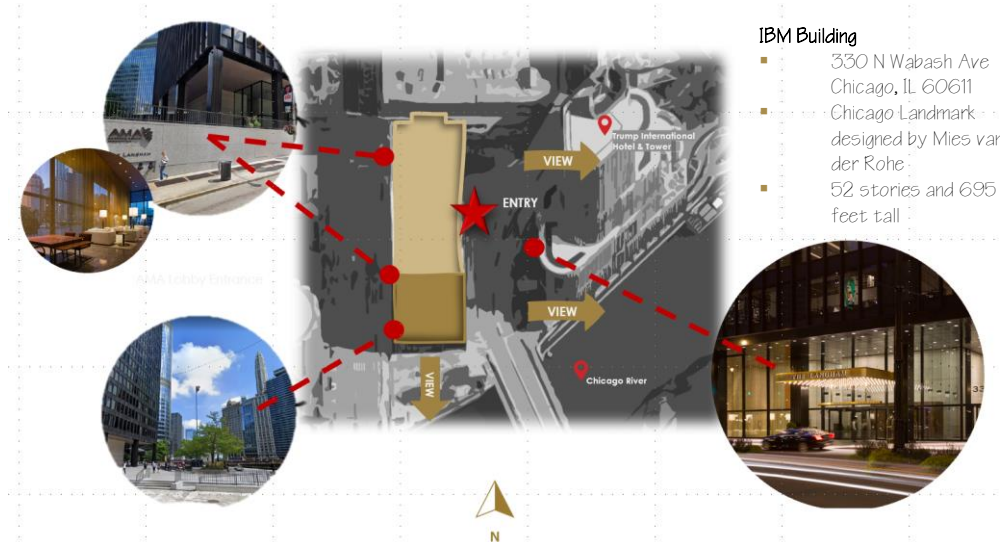
Ground Floor:  
Lobby & Concierge



## THE PROGRAM

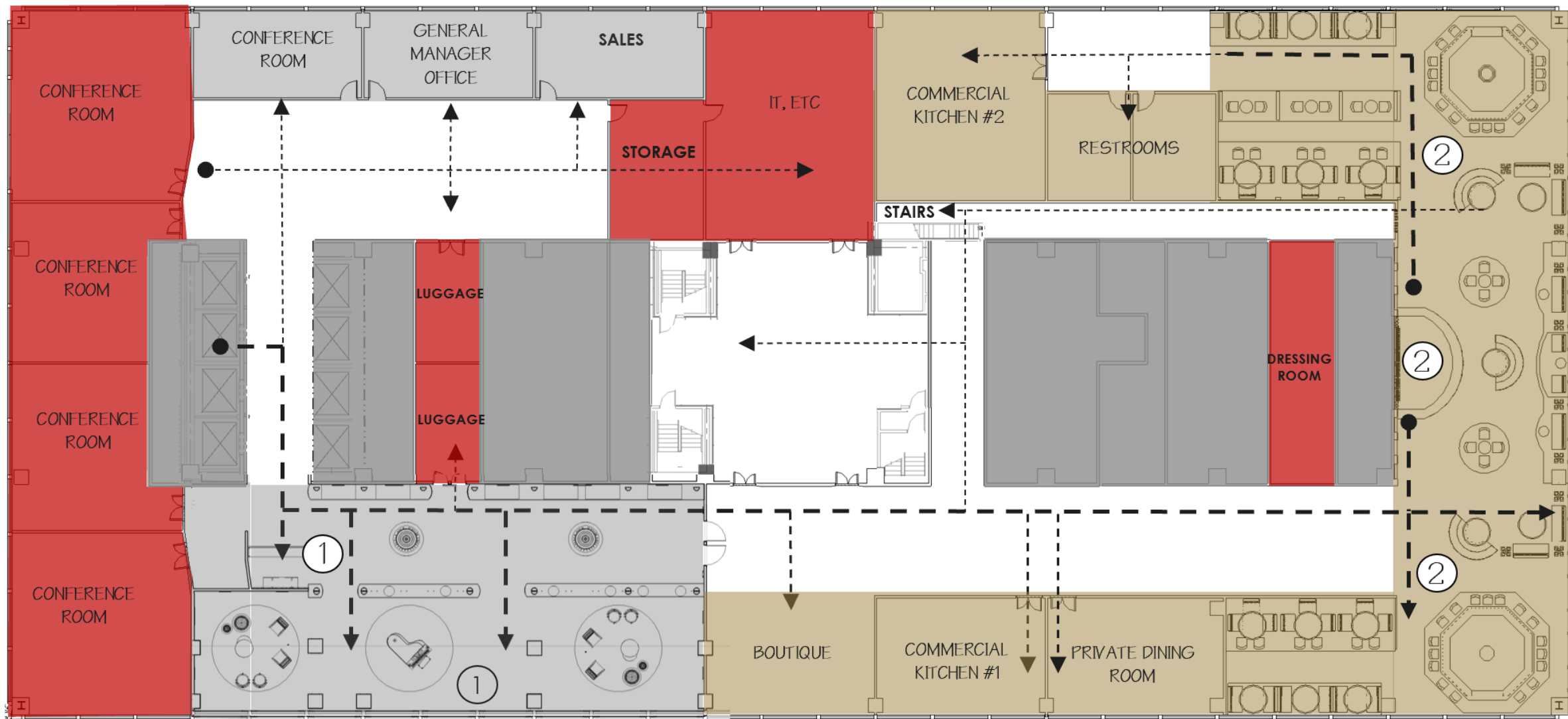
### IBM Building

- 330 N Wabash Ave  
Chicago, IL 60611
- Chicago Landmark  
designed by Mies van der Rohe
- 52 stories and 695  
feet tall



The architectural and interior designs reflect two opposites as well, a collision of two different styles of *the Miesian exterior* in respect to the originality of the IBM building and *Art Deco interior*, with architectural elements of the *regular rhythm* of lines, the *balance* between class and leisure, and *value* of rich colors, materials, ornaments, and special attention to the detail to bring the feeling of the highly designed theaters located in that area.

# HOSPITALITY - BOUTIQUE HOTEL



① RECEPTION & LOBBY

② STAGE & DINING & BAR

PRIVATE SPACES

SEMI-PUBLIC SPACES

PUBLIC SPACES

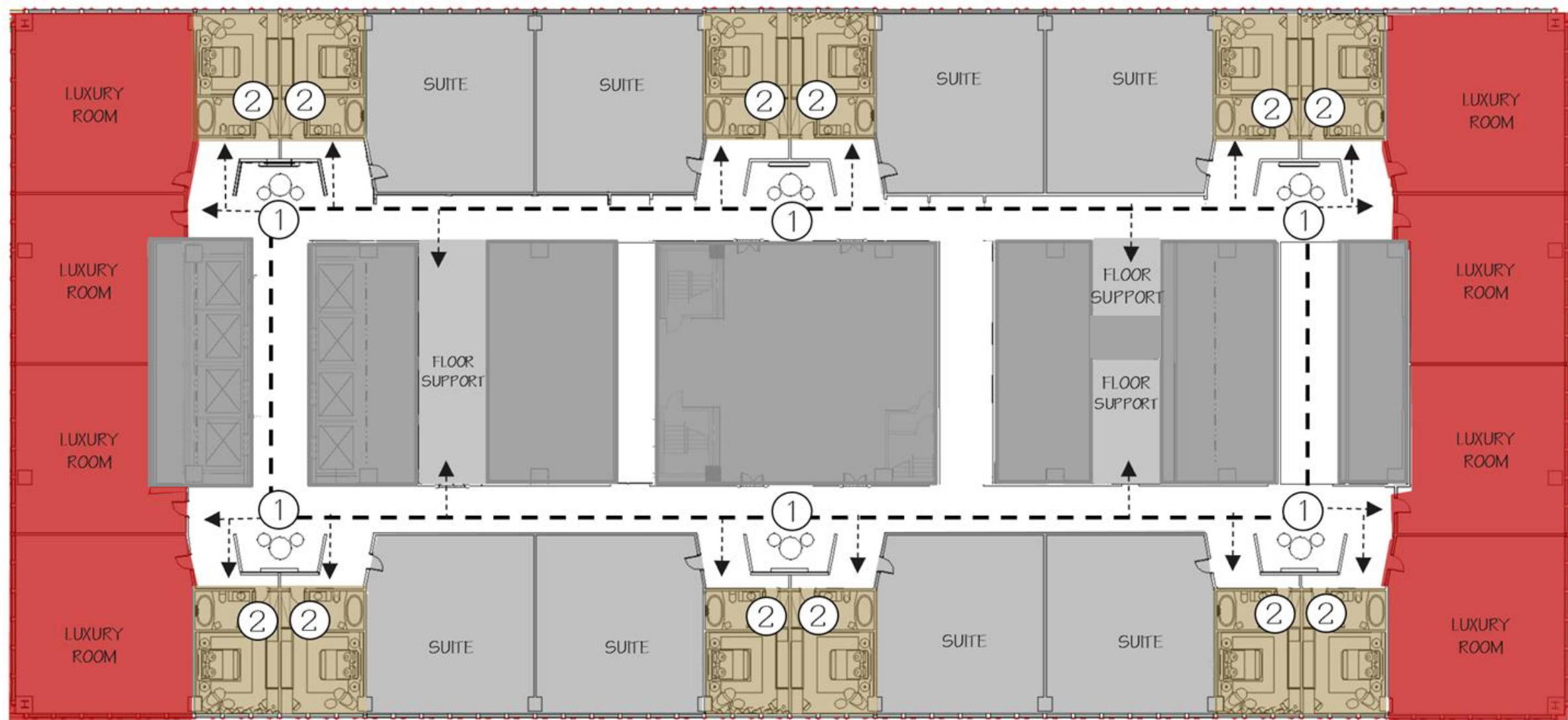
BUILDING CORE

—→ MAIN CIRCULATION

- - -→ SECONDARY CIRCULATION







1 SPACE OF ARRIVAL	2 STANDARD ROOM	PRIVATE SPACES	SEMI-PUBLIC SPACES	PUBLIC SPACES	BUILDING CORE	MAIN CIRCULATION	SECONDARY CIRCULATION
--------------------	-----------------	----------------	--------------------	---------------	---------------	------------------	-----------------------

# HOSPITALITY – BOUTIQUE HOTEL



Orsjo Skyline  
Wall Lamp



Orsjo Skyline  
Floor Lamp



Orsjo Belysning Skyline  
Lighting

Elevation of the wall  
with movie posters  
and custom "CHICAGO"  
light sign and skyline  
background



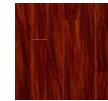
STAGE ELEVATION



DINING & BAR



Red Brick



Hampstead Brazilian  
Cherry Laminate



Black Leather



Checker Tiles



Black with Gold  
Detailing Leather



Red Velvet



Allermuir Cardita  
Barstool

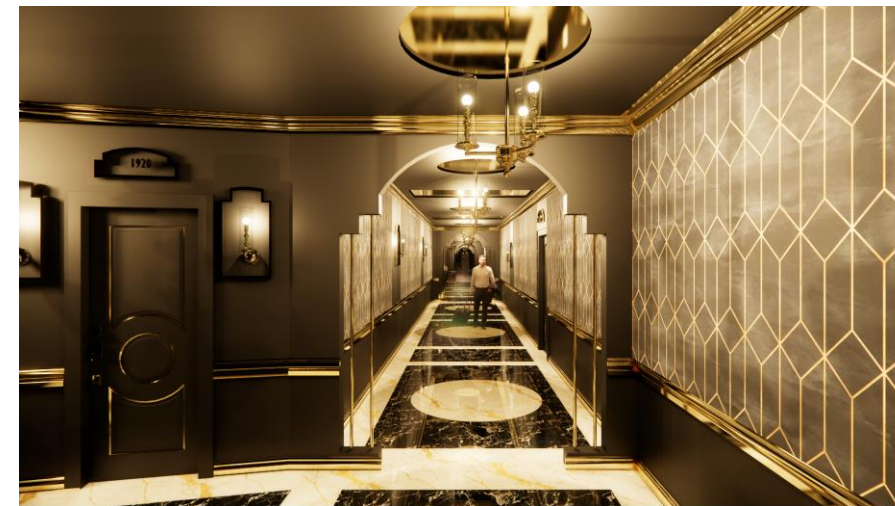


Allermuir Cardita  
Armchair





STANDARD QUEST ROOM



CORRIDOR EXPERIENCE



Silencio Armchair  
Richard Ferrer For Sancal



Care Julia Nordic  
Tray

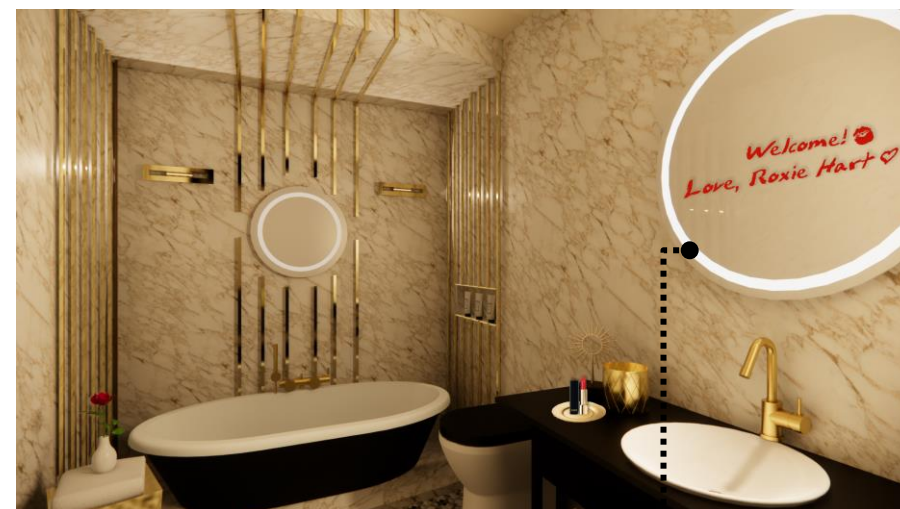


Mirror With 2 Integrated  
Horizontal LED Light Bands

Guest Experience:  
Red Lipstick with  
hotel logo for room  
quests to keep as a  
souvenir



Easy cleanable  
welcoming  
message in red lipstick  
from Roxie Hart, the  
main character of  
"Chicago" the musical  
to bring sense of her  
"spirit"



S.R. RESTROOM



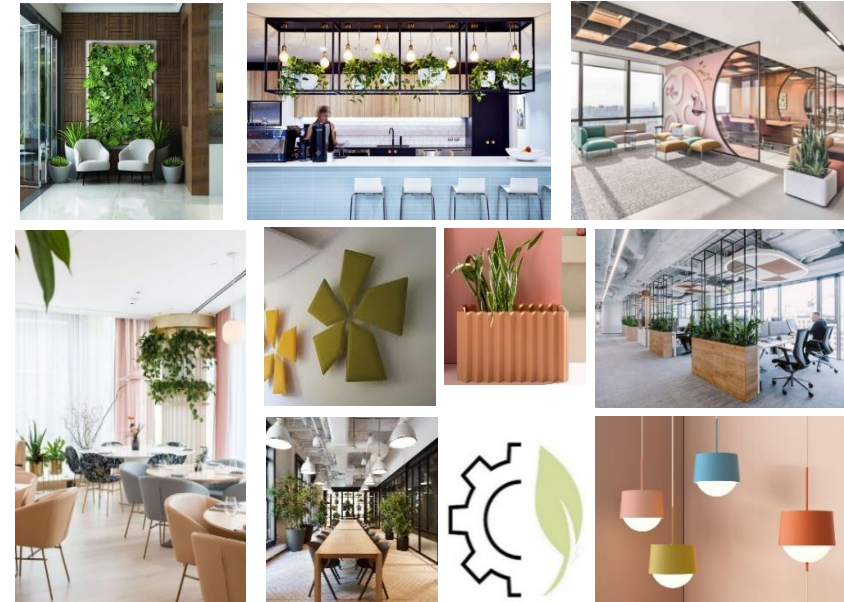
**CHICAGO**  
HART  
previews PREMIERE of the famous "Chicago" the musical  
Dates: March 29-31. Tickets are available at reception and online.

## SHIFT: Concept Statement

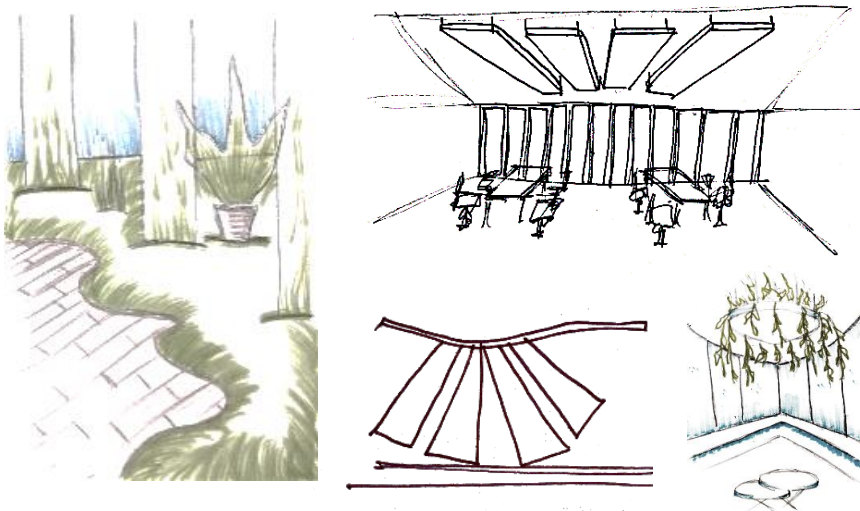


The space focuses on nature as a system for energy exchange, with hubs that stimulate ideas and linear paths that promote movement. Shift maximizes opportunities for collision and collaboration to promote a culture of imagination and innovation.

As Shift reinforces the need for change management, the building ultimately becomes an “idea engine” that allows organizations to regrow and recharge their future. With biophilic and naturalistic forms throughout the space, Shift is also able to promote wellness and well-being for all who inhabit it.



INSPIRATION IMAGES



ARCHITECTURAL SKETCHES

*Project:*  
Corporate Office and Client Gallery  
*Time Frame*  
Junior Year, Spring 2020 – 6 weeks  
*Square Footage:*  
30,000 sq. ft  
*Location:*  
3500 Lennox Rd NE #625 Atlanta, GA 30326

*Programs:*  
Autodesk Revit + Enscape + Adobe Photoshop  
*Team Members:*  
M. Morino | J. Seraphin | M. Supancic



# CORPORATE OFFICE - CHANGE MANAGEMENT



INFORMAL COMMUNITY ZONE



ORGANIZATIONAL RESEARCH



RECHARGE AREA



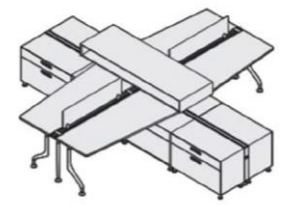
Blu Dot Massaud Conference Chair Sofa



Media Scape Desk Height



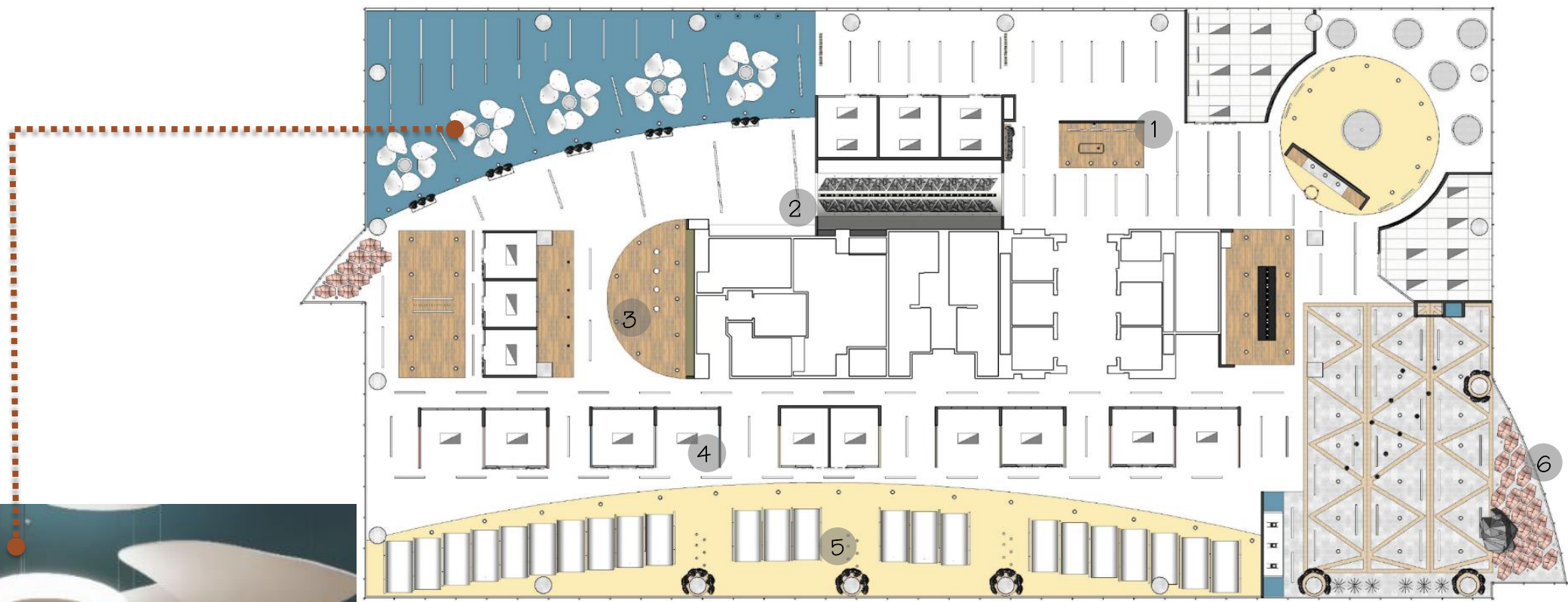
SILQ Task Chair



Organizational Research Workstation Axo



# CORPORATE OFFICE - CHANGE MANAGEMENT






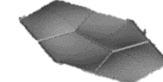


REFLECTIVE CEILING PLAN  
1/16" = 1' - 0"



EDUCATION FACILITATION AND TRAINING

## LIGHTING LEGEND:

- |  |   |  |
|--|---|--|
| <p>1 Pipeline LED Linear</p>      | <p>2 Turf Fractal Panel</p>  | <p>3 Cooper Halo Led</p>          |
| <p>4 Lighting Troffer Cooper</p>  | <p>5 3 Form S Panel</p>      | <p>6 Cloud Circle Acoustical</p>  |

ENTRY + RECEPTION



PERSUASION GALLERY

# CORPORATE OFFICE - CHANGE MANAGEMENT



FLOOR PLAN  
1/16" = 1' - 0"

- |                             |   |  |                       |                            |  |                   |
|-----------------------------|---|--|-----------------------|----------------------------|--|-------------------|
| 1 Entry and Reception       | 4 Shift CEO                                       | 7 Client Path                          | 10 Informal Community | 13 HR Manager              | 16 Director of Change Strategies Group | 19 Work Cafe      |
| 2 Administrative Assistants | 5 SHIFT CFO                                       | 8 Education, Facilitation and Training | 11 Office Manager     | 14 Change Strategies Group | 17 Director of Organizational Research | 20 Small Workshop |
| 3 Persuasion Gallery        | 6 Director of Education Facilitation and Training | 9 Recharge Area                        | 12 Well Being Manager | 15 8 Project Team Zones    | 18 Organizational Research             | 21 Large Workshop |

# CORPORATE OFFICE - CHANGE MANAGEMENT



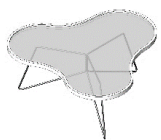
Blu Dot Jac Classic Stool  
(cafe by window)



Media Scape Desk Height  
(Project Teams)



Media Scape Desk Height  
(Project Teams)

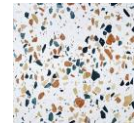


HighTower Flower Table  
(education\_cafe)



WORK CAFE KITCHENETTE

VIEW OF WORK CAFE FROM WINDOW



Plywood Planks

Terrazzo

Vinyl



CAFE KITCHEN  
1/4" = 1' - 0"

VIEW OF WORK CAFE FROM PROJECT TEAM ZONES



## Un Pedazo De La Havana: Concept Statement

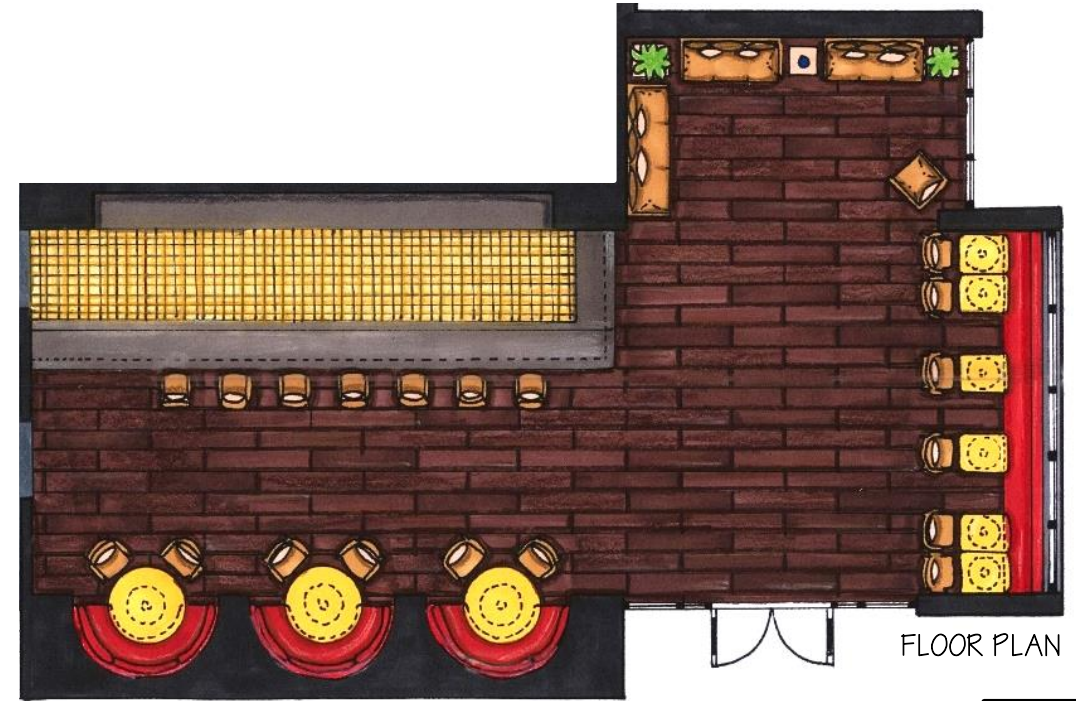


If you are looking for a cozy, fulfilled with bright colors place, where you can enjoy a mind-blowing delicious and unlike any other burger and potato sticks, you'll ever try, relax with your family and

friends surrounded by Cuban traditional atmosphere, then Un Pedazo de la Havana is a restaurant for you. A spot of a good representation of American influence on Cuban culture, and vice versa.



VIEW FROM ONE OF THE DINNING AREA

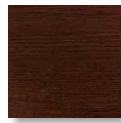


*Project:*  
Restaurant: Un Pedazo de la Havana  
*Time Frame:*  
Sophomore Year, Fall 2018 – 4 weeks  
*Location:*  
Eugene, OR.

*Programs | Media:*  
Hand Rendering | Adobe Photoshop



Ceramic Tile  
Floor Finishing in  
Bar Area



Luxury Vinyl Plank  
Main Flooring in Dining and  
Lounge Area



Leather  
Sectional Sofas in  
Dining Area



Textile:  
Lounger Furniture & Cushions



Solid Surface  
Tabletop in Dining  
Area



VIEW FROM ENTRY



INSPIRATION IMAGES

VIEW FROM ENTRY







FURNITURE



VIEW FROM SEATING AREA

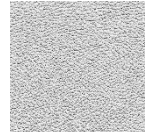
*Project:*  
Hot Topic: Executive + Corporate Office(s)  
*Time Frame*  
Sophomore Year, Spring 2019 – 6 weeks  
*Square Footage:*  
1000 sq ft  
*Location:*  
New York City, NY

*Programs:*  
AutoCAD + 3DS Max | Adobe Photoshop





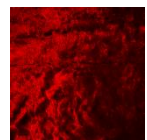
Soft Armchair Pattern



Puff Chair: White Leather



Pillowcases

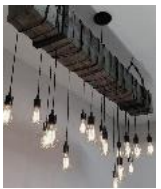


Chair: Red Velvet

VIEW FROM THE BOARDS



FLOOR PLAN



# CORPORATE OFFICE - HOT TOPIC



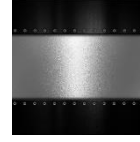
Red Brick Walls



Wooden Planks Flooring



Armchair Texture  
- Red Velvet



Logo Wall Texture  
- Matte Metal



FLOOR PLAN

Furniture /  
Decor /  
Inspiration



Posters  
Used In  
Conference  
Room



INSPIRATION IMAGES



VIEW FROM THE WINDOW

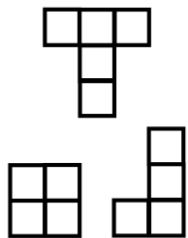
VIEW FROM ENTRY



VIEW FROM CLOSET AREA



## CONCEPT STATEMENT



### TETRIS

SHELVES AND CUBE STORAGE UNITS ARE THE PERFECT SOLUTION TO ORGANIZE SUPPLIES AND TEXTBOOKS IN INTERIOR DESIGN STUDIO. ALWAYS CLOSE TO REACH ON A DESK, TO DISPLAY BEAUTIFUL DÉCOR, TO STORE THE *PRISMA* MARKERS AND TEXTBOOKS STUDENT NEEDS. THIS COLLECTION FEATURES THREE MAIN PIECES OF TOTAL.

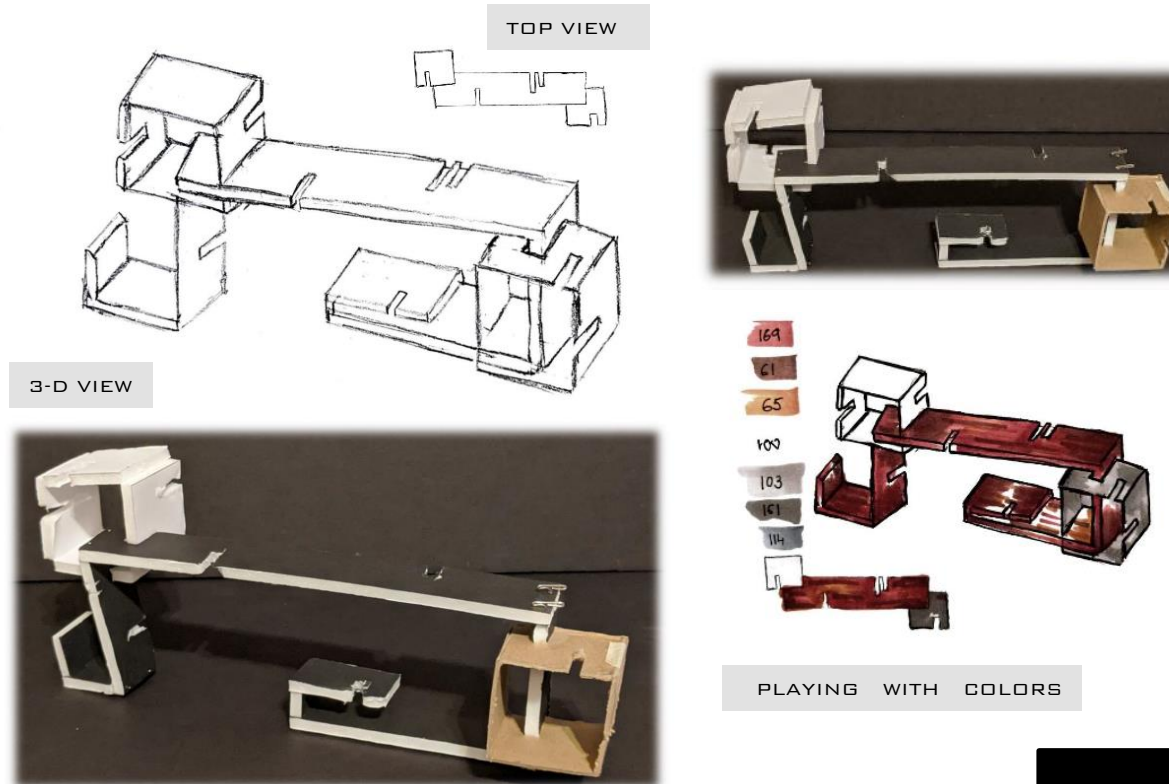
AN ADDITION BONUS OF THE FINISHED PRODUCT IS PROVIDING A PRIVACY PARTITION BETWEEN THE TWO TABLES OF THE STUDENTS.

#### DICTIONARY DEFINITION:

THE NAME TETRIS DERIVES IN PART FROM THE GREEK PREFIX TETRA-, MEANING "FOUR," A REFERENCE TO THE FACT THAT EACH BLOCK CONSISTS OF AN ARRANGEMENT OF FOUR ADJOINING CUBES (KNOWN AMONG GAMERS AS TETROMINOS).



INSPIRATION



TOP VIEW

3-D VIEW

PLAYING WITH COLORS

#### FUNCTIONS:

- SHELF
- PARTITION

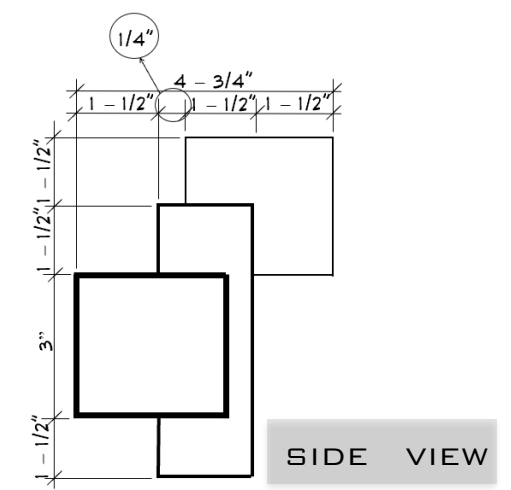
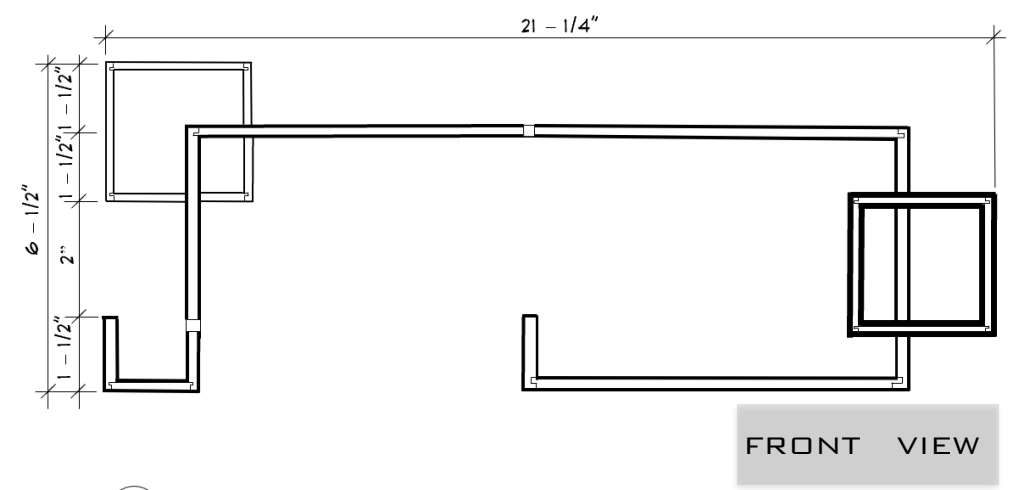
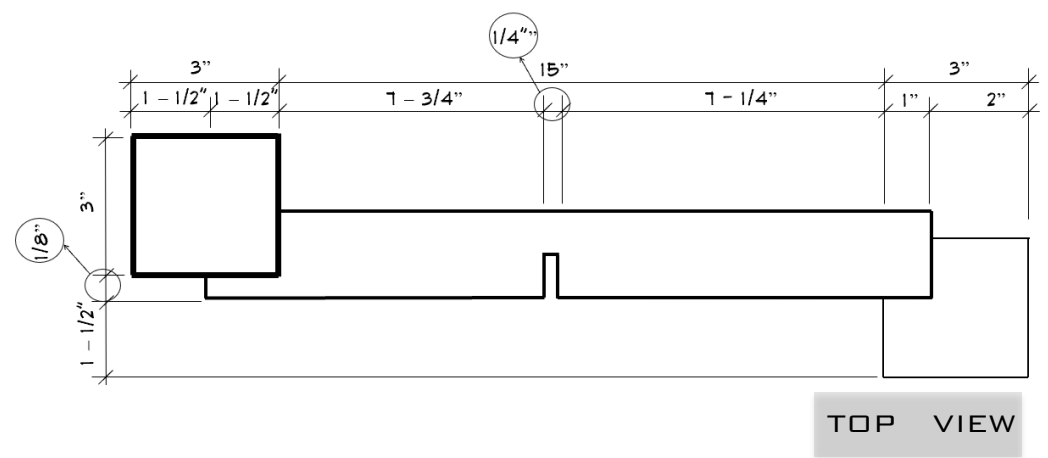
#### LOOK:

- MODERN
- SLICK

#### LOCATION TO BE INSTALLED:

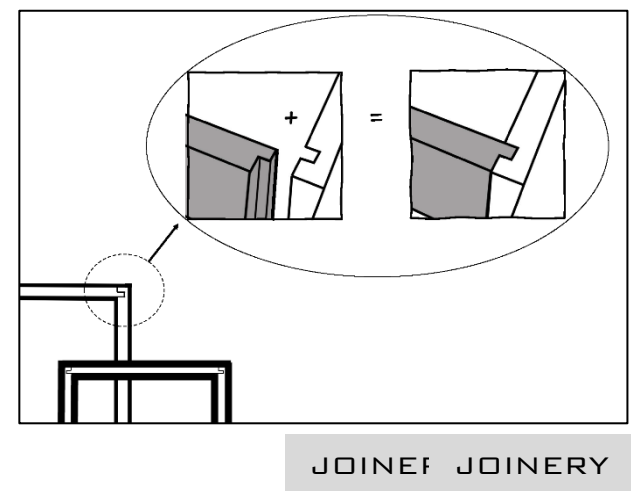
- STUDIO DESK

DIGITAL FABRICATION TECHNIQUE: LASER CUTTING - WOODEN PIECES ARE CUT AND ENGRAVED BY A LASER BEAM

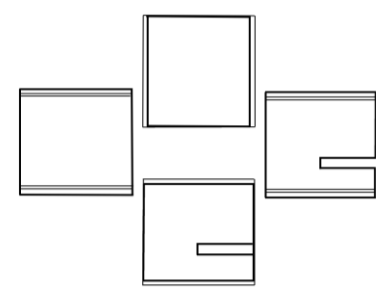


SCALE: 1/4" = 1' - 0"

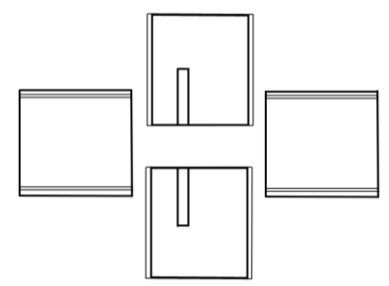
WOOD PIECES ARE 1/8" THICK



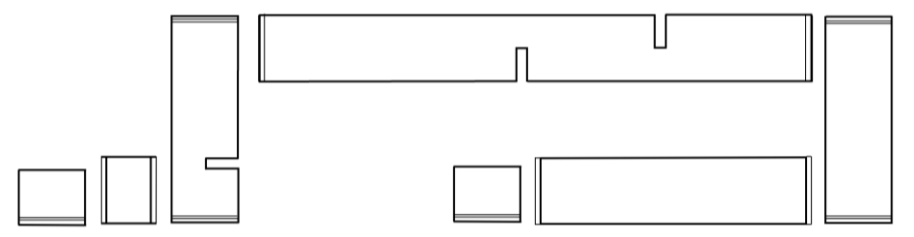
PIECES FOR BLACK LEFT SQUARED PIECE:



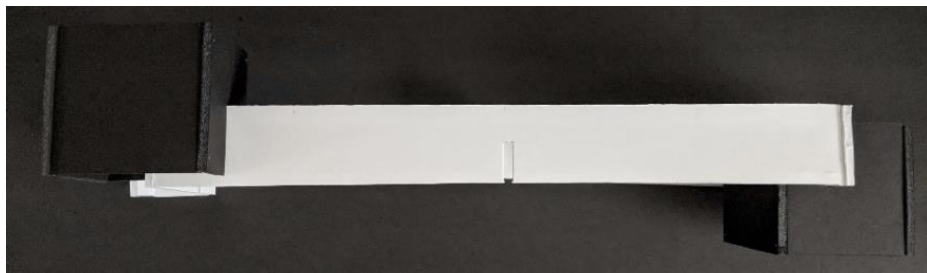
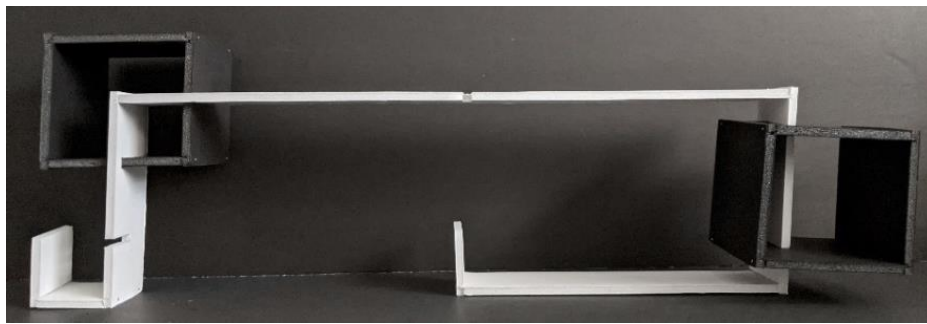
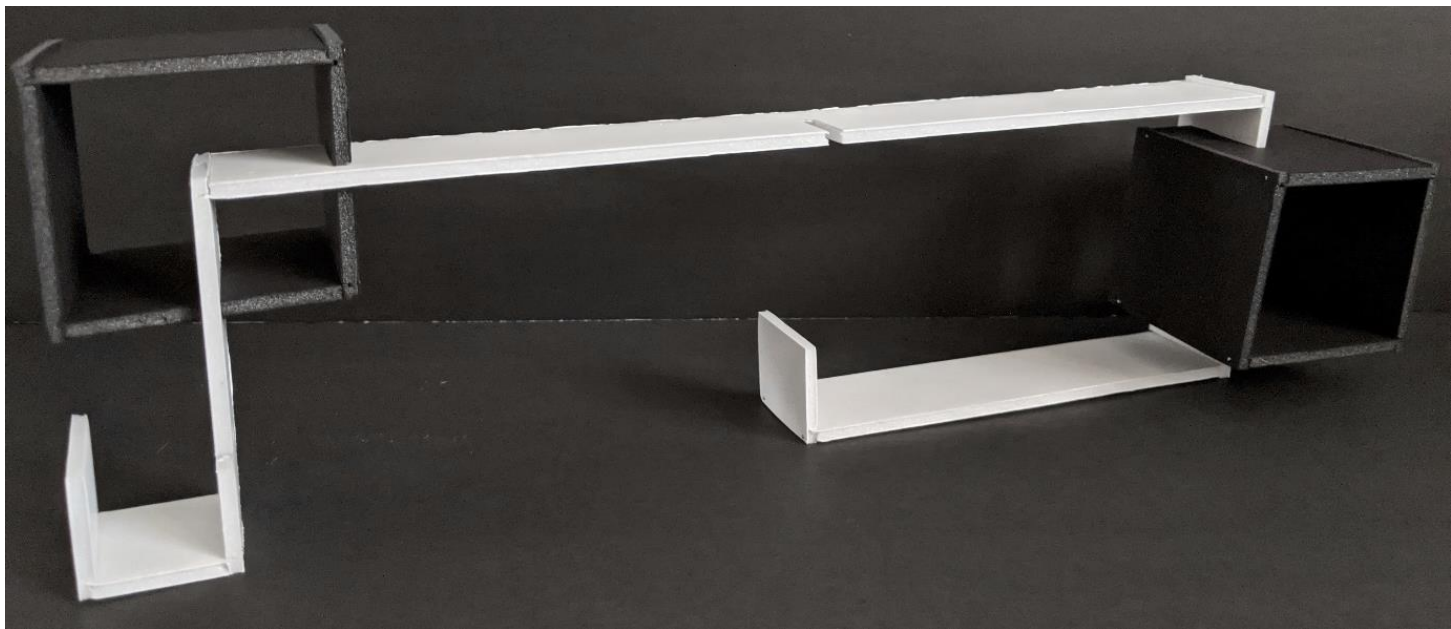
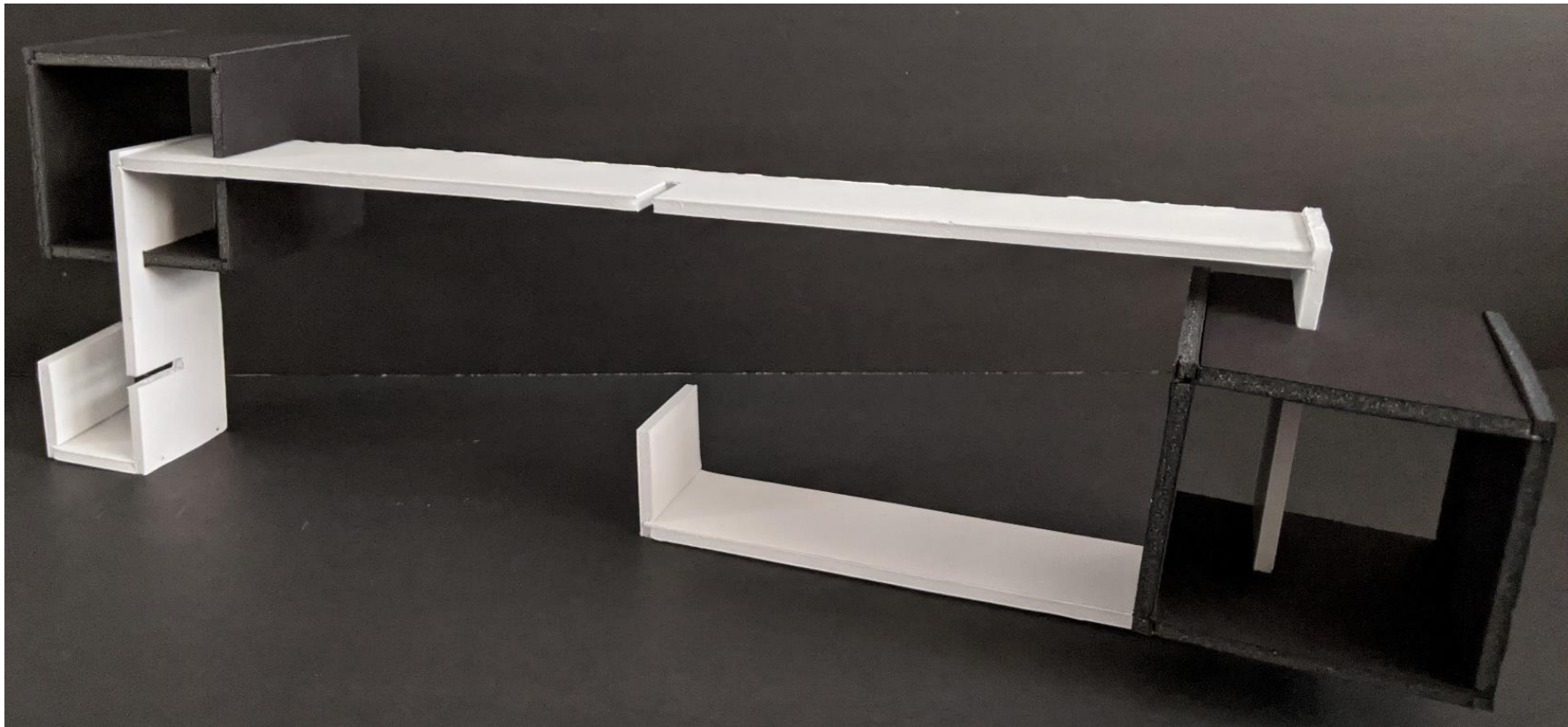
PIECES FOR BLACK LEFT SQUARED PIECE:



PIECES FOR WHITE LONGITUDINAL DATUM:



# FOAMI BOARD MIJDEL (FINAL MIJDEL)





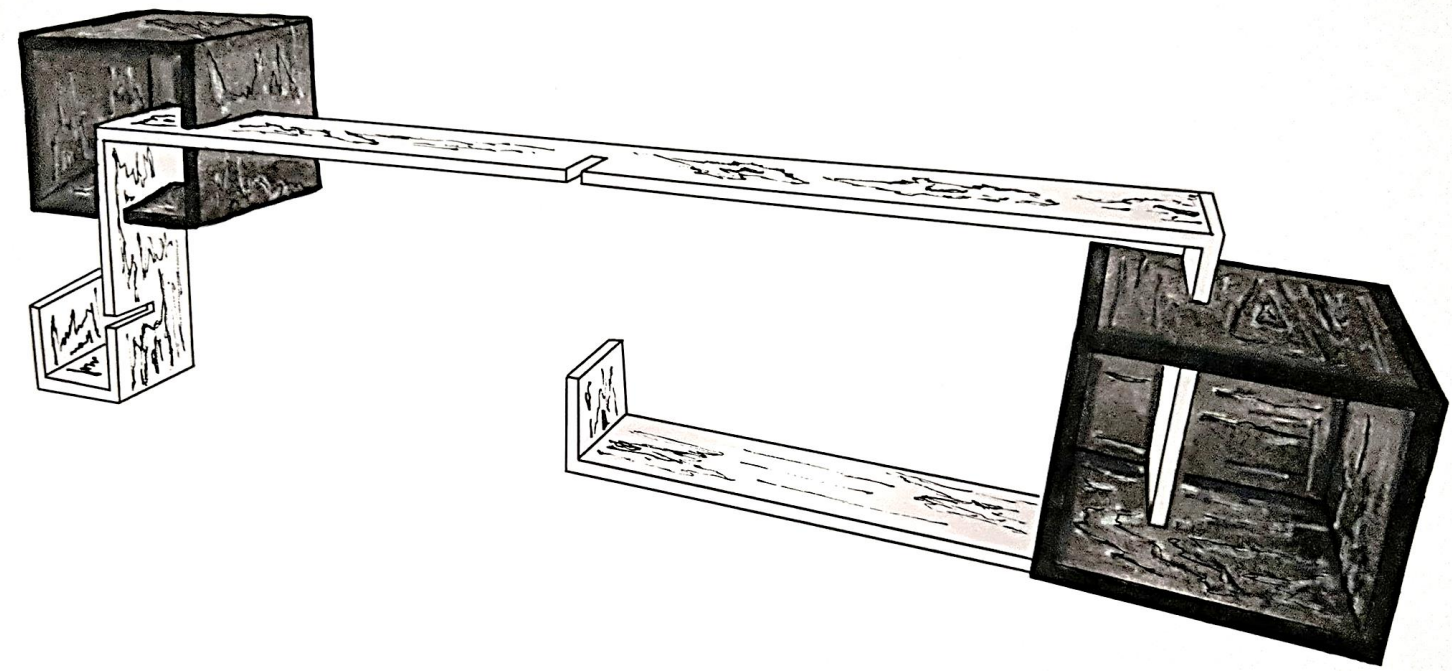
MATERIAL: PLYWOOD



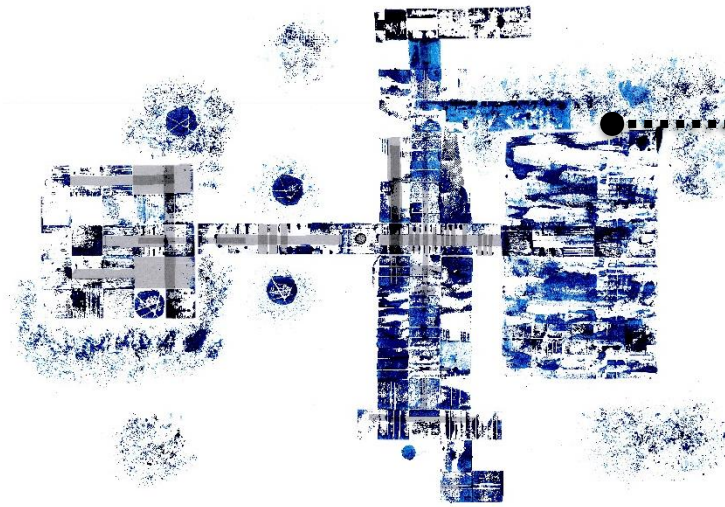
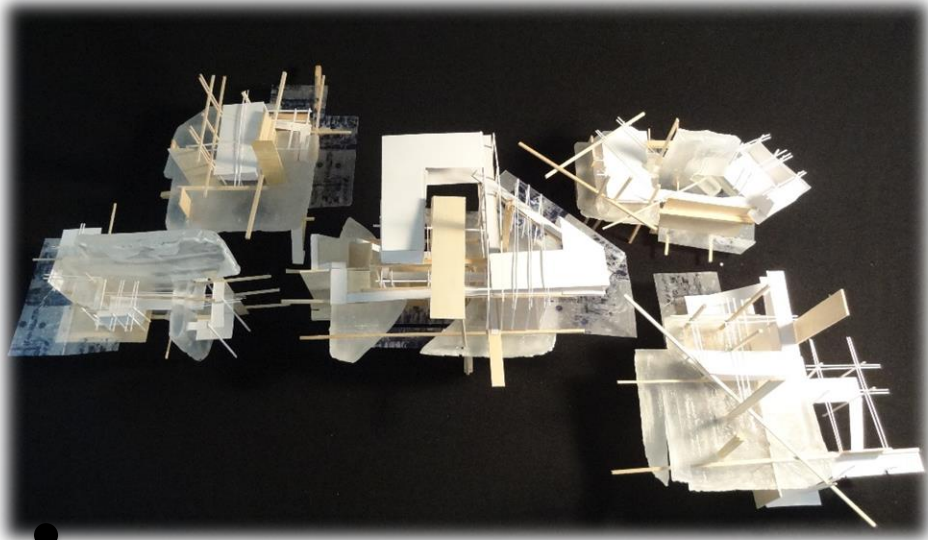
WOOD FINISH: OIL-BASED STAINED BLACK



WOOD FINISH: PAINTED WHITE

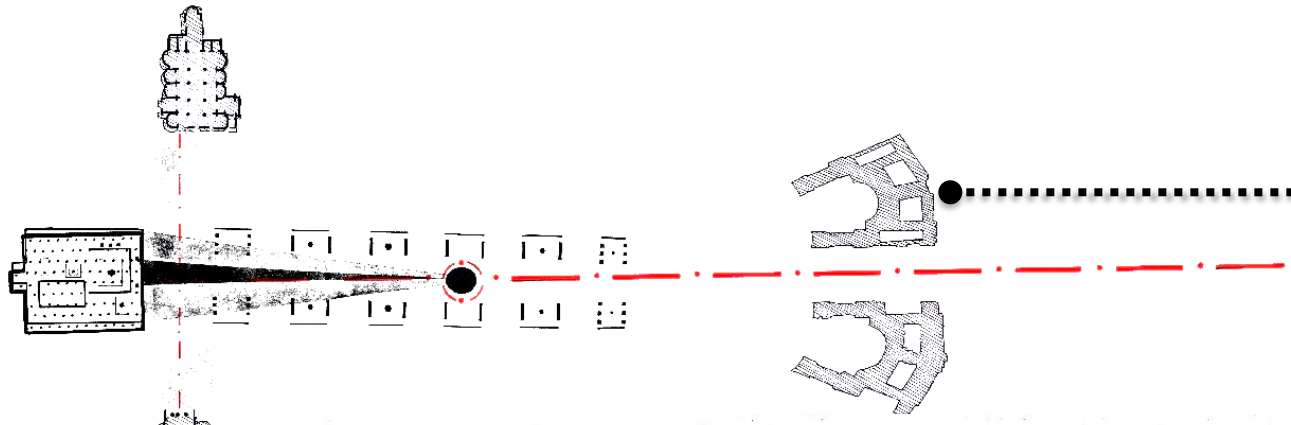


# FUNDAMENTALS - ARCHITECTURAL DESIGN III - RUINED CITY

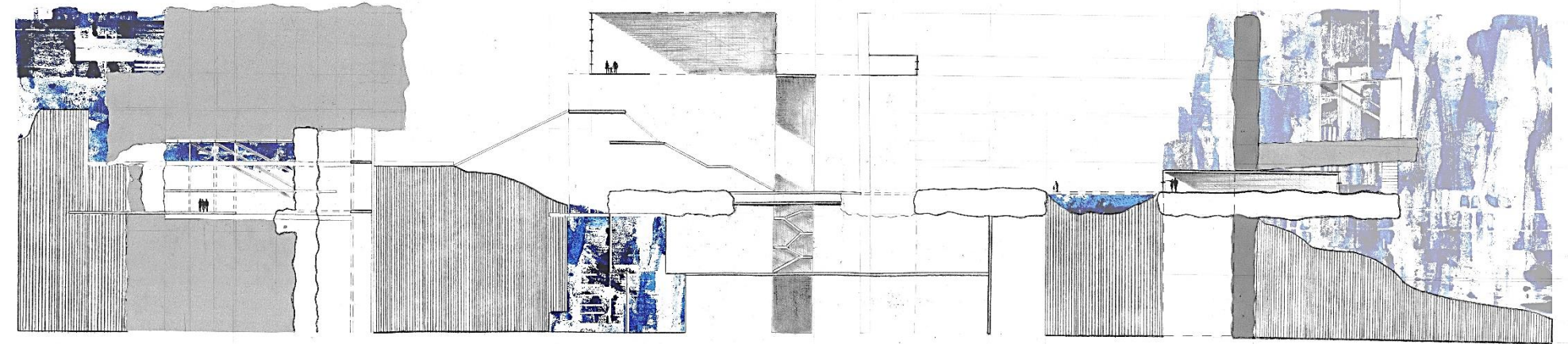


Stamped Ruined City Plan  
Media: wooden 'Obelisk' Stamps, acrylic paint, sticky bag.

Obelisks: used as stamps to create a stamped ruins city plan  
Media: wooden blocks



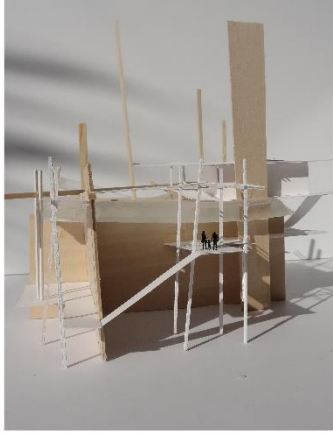
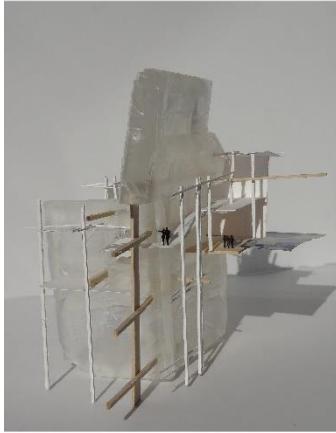
LAYERS OF THE MAIN AND SECONDARY CIRCULATION CITY PATHS



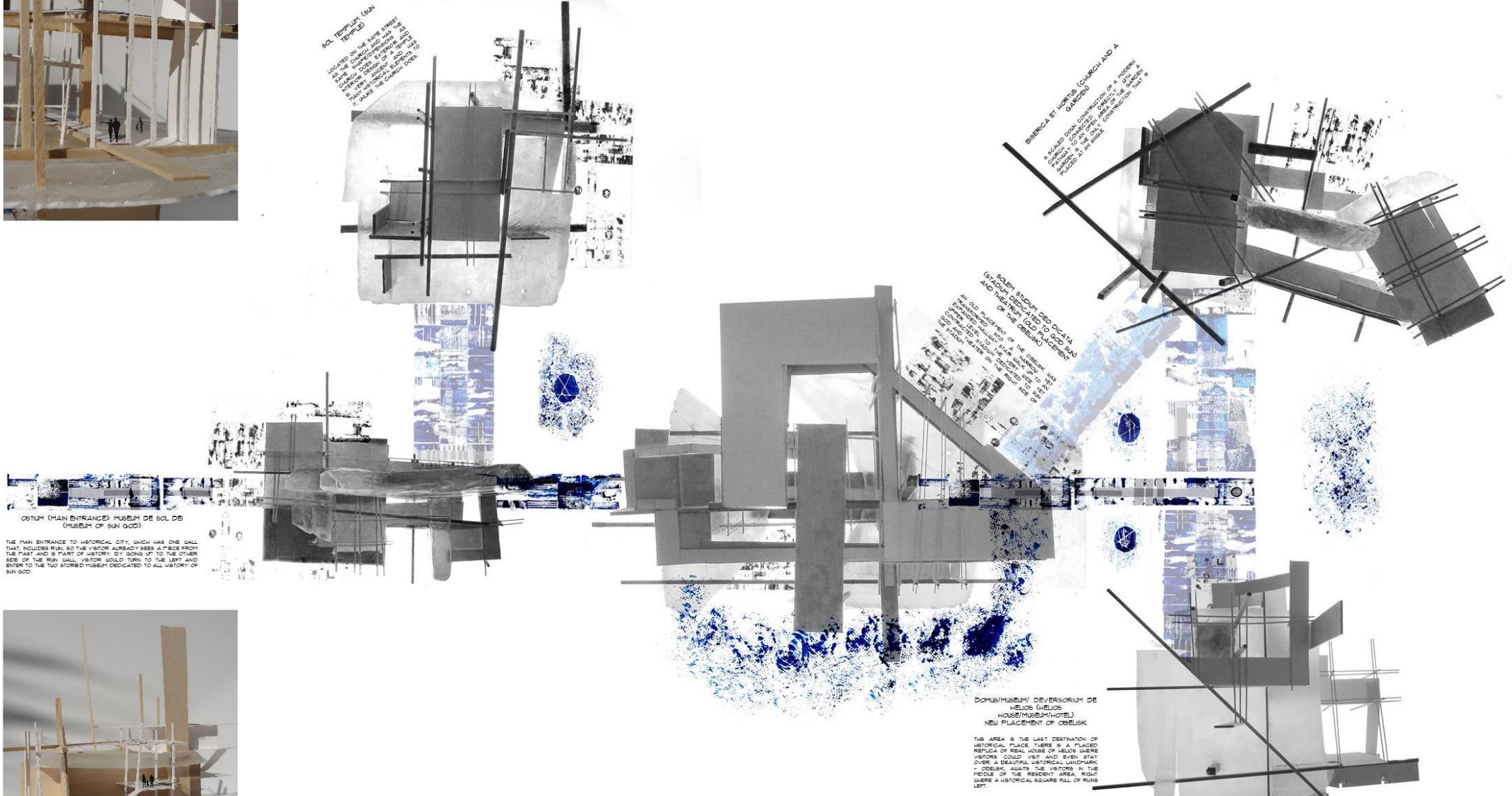
SECTION

RUINED CITY: BUILDING ORGANIZATION WITH PHYSICAL MODELS  
Media: wood, glycerin, plexi glass, bristol paper.

# FUNDAMENTALS - ARCHITECTURAL DESIGN III - RUINED CITY



PHYSICAL MODELS



RUINED CITY PLAN (CONCEPT INCLUDED)



ANGELINA

GAYRINA