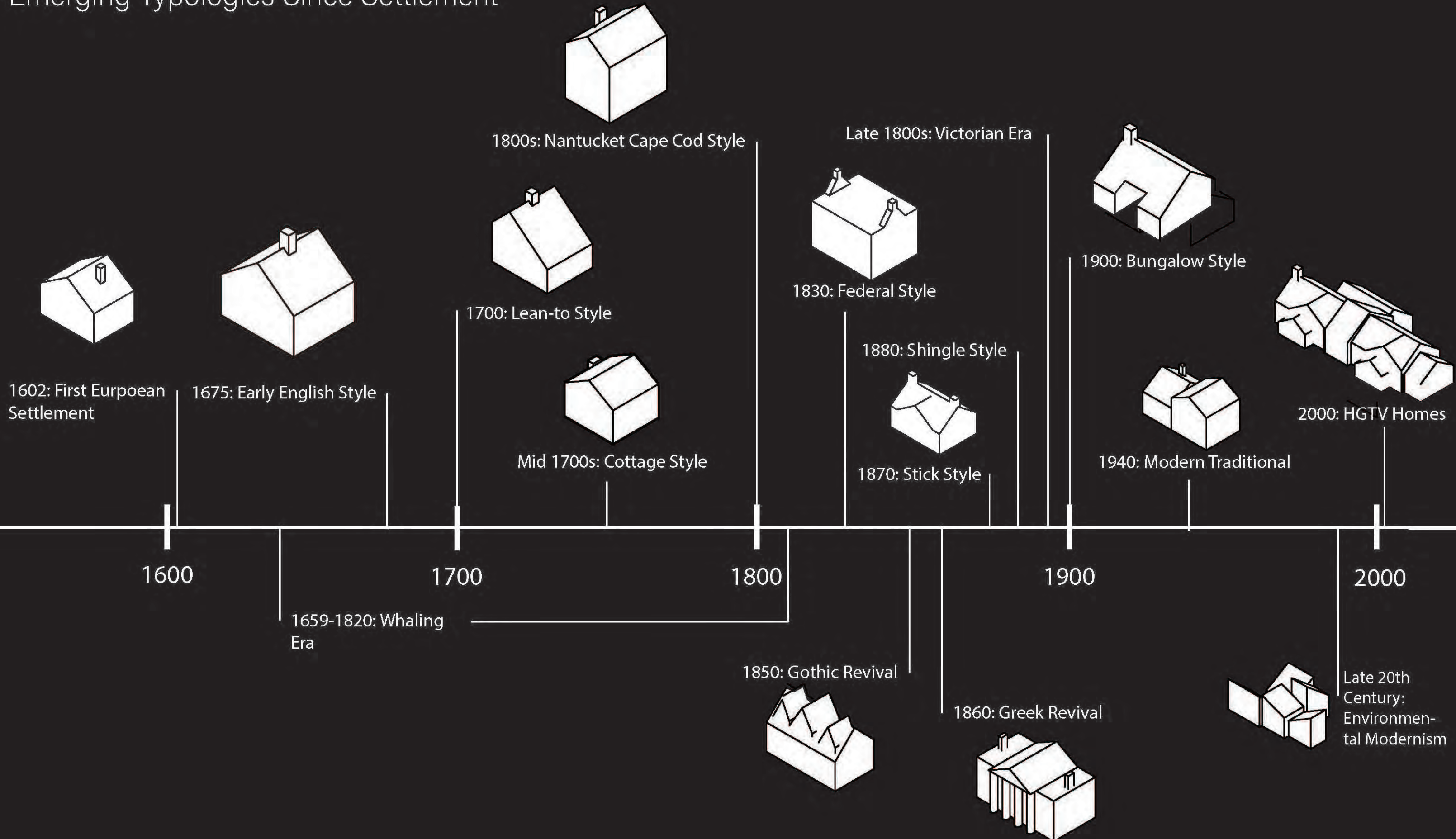




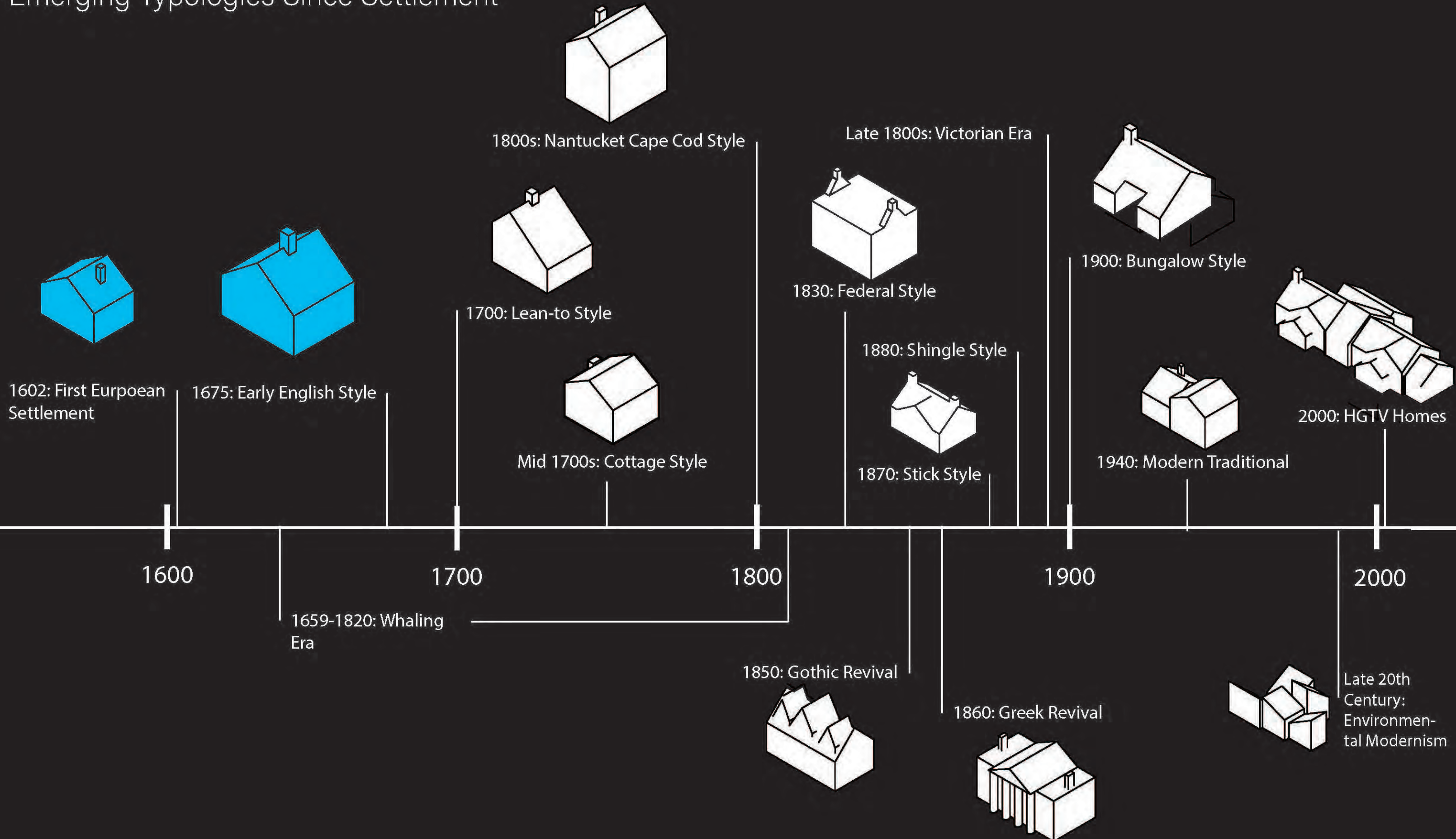
Nantucket's Past to Future Homes:
Evolving Housing Design for Today's Needs

Nicolas Roscioli-Barran

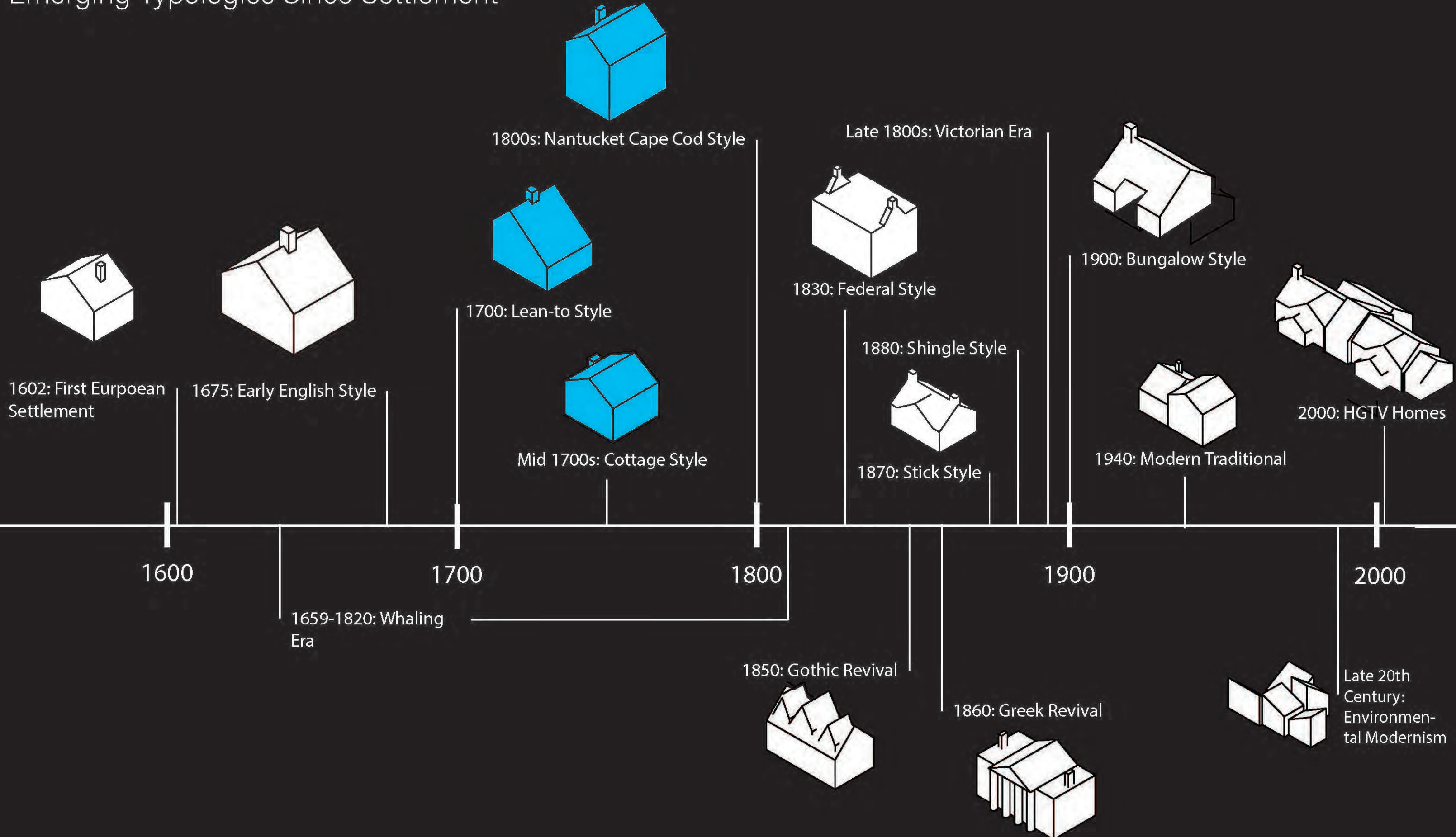
Emerging Typologies Since Settlement



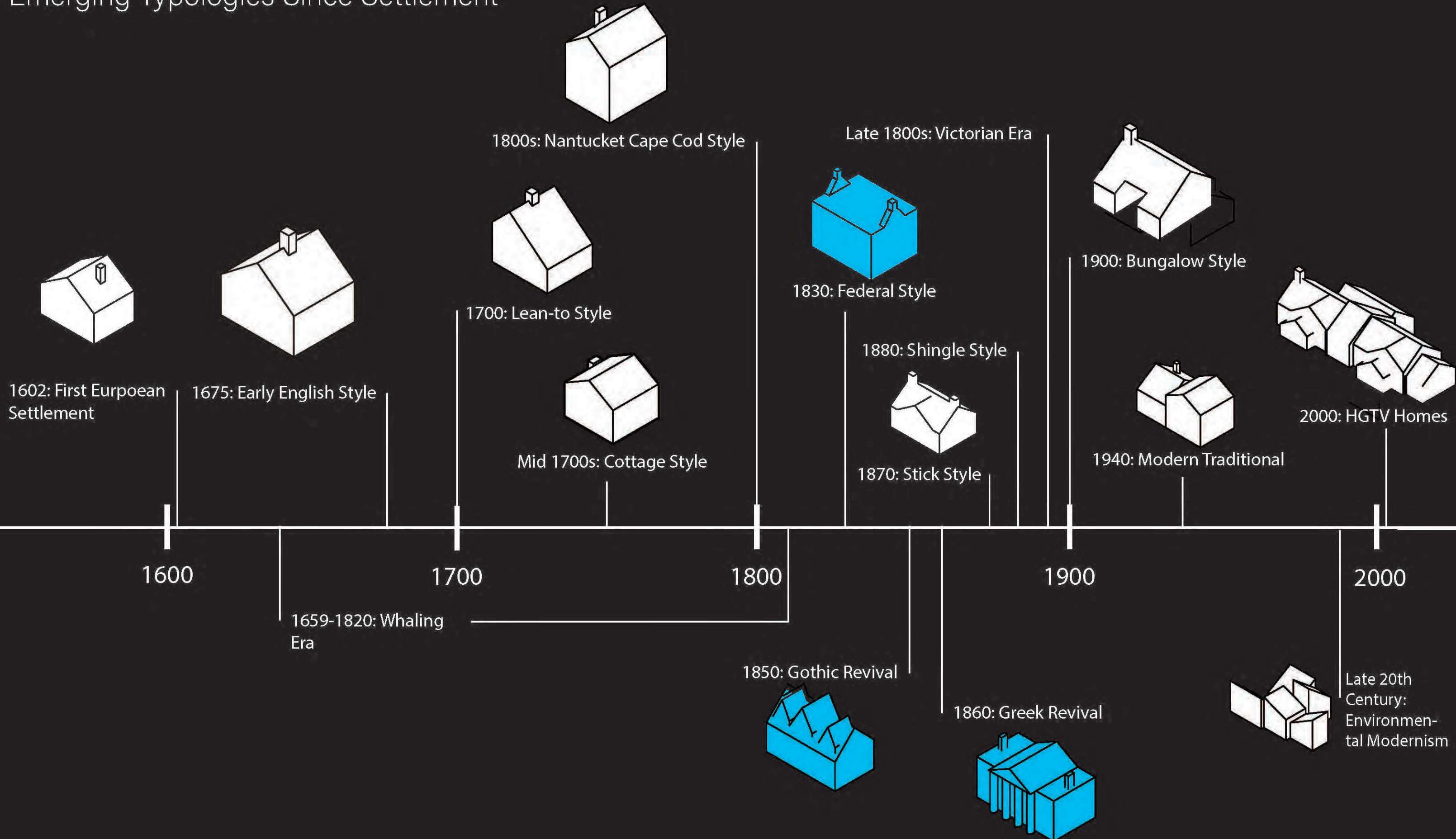
Emerging Typologies Since Settlement



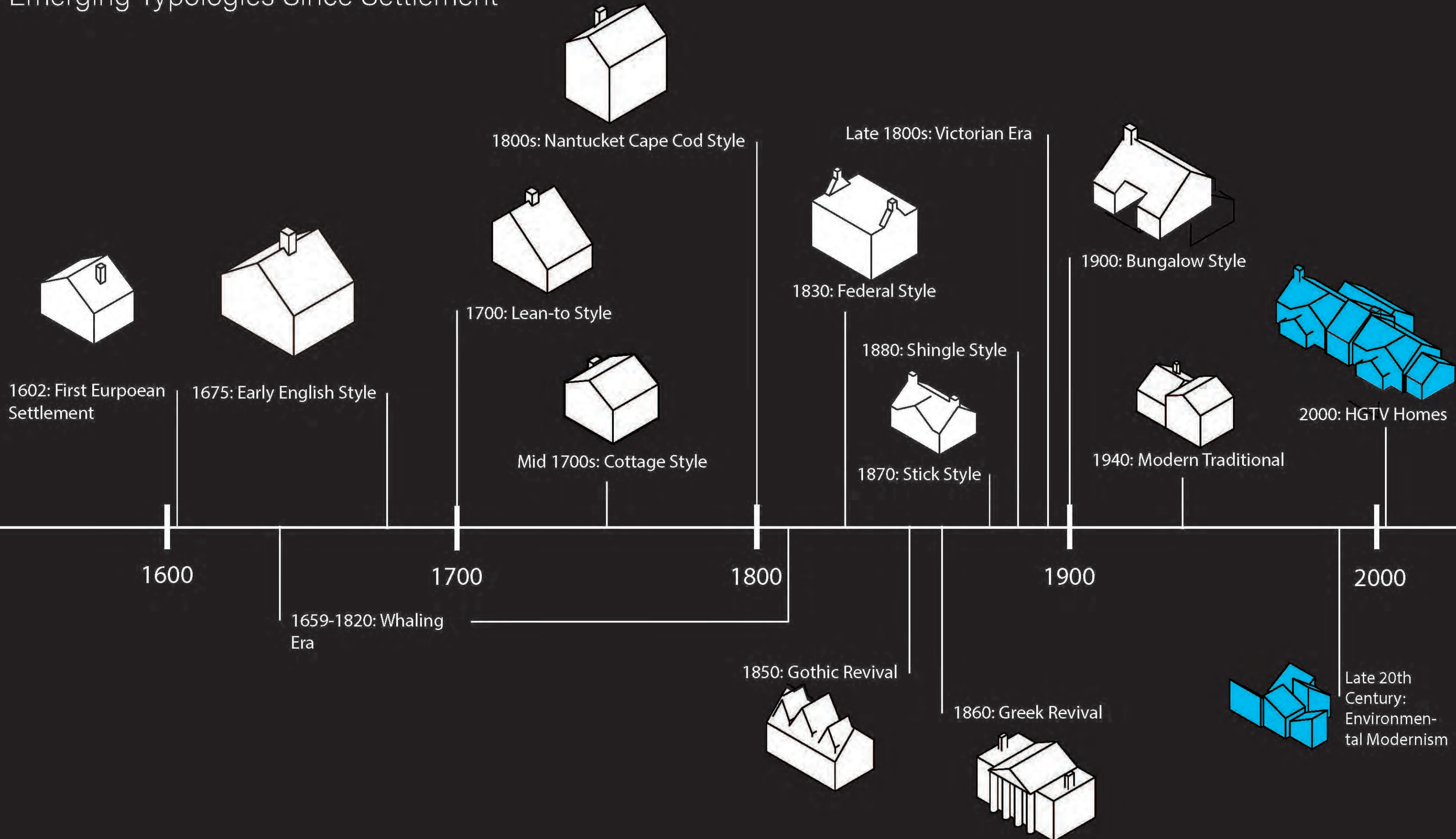
Emerging Typologies Since Settlement



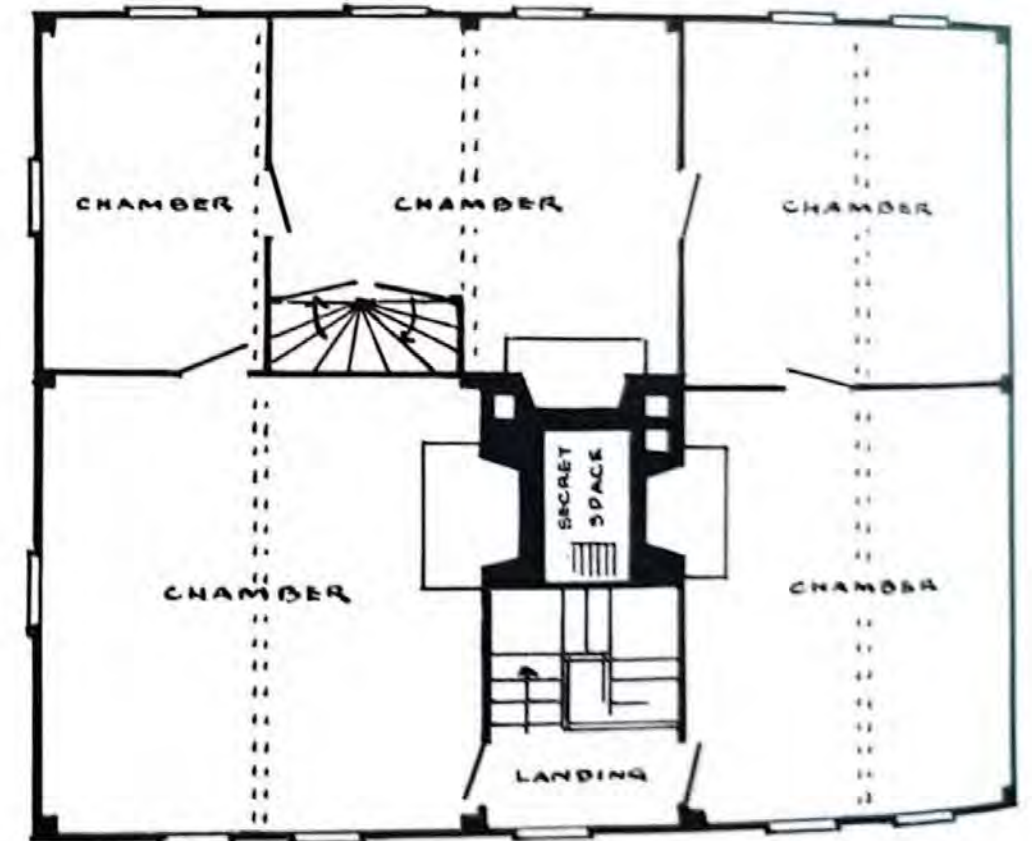
Emerging Typologies Since Settlement



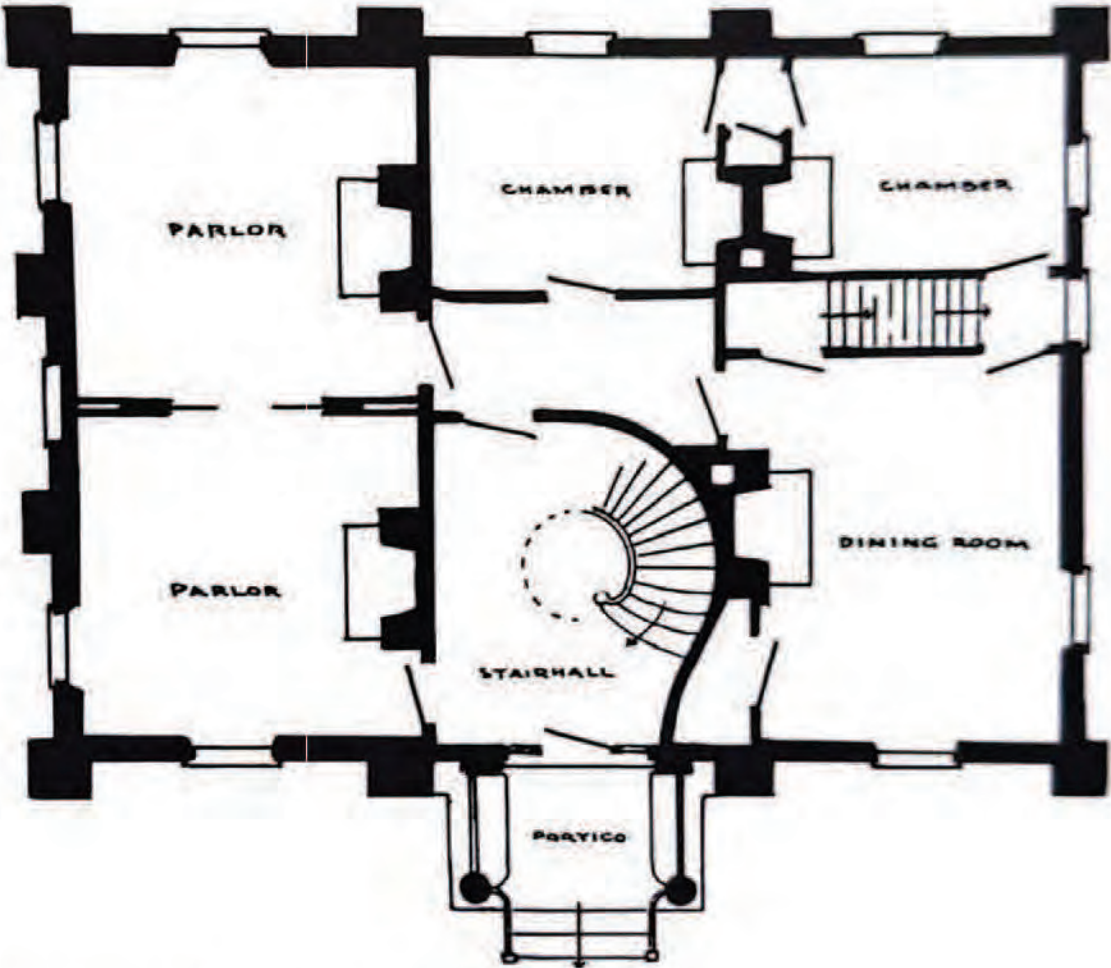
Emerging Typologies Since Settlement



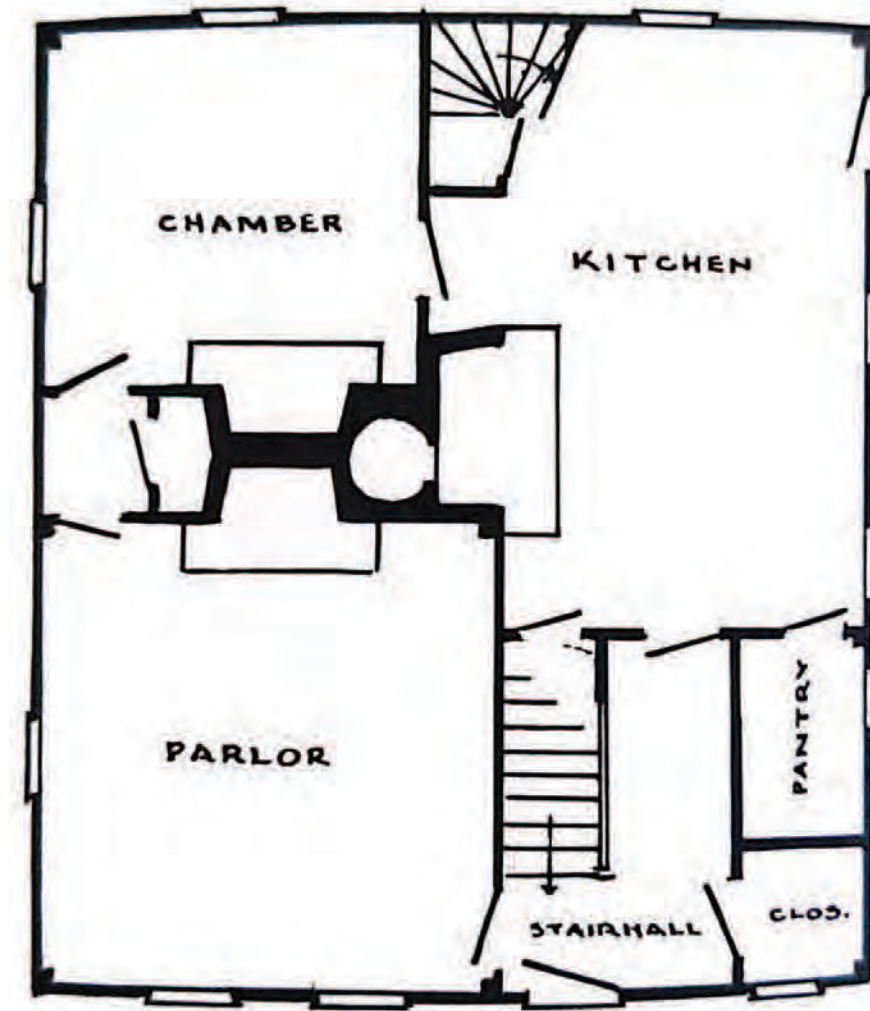
Typical Nantucket



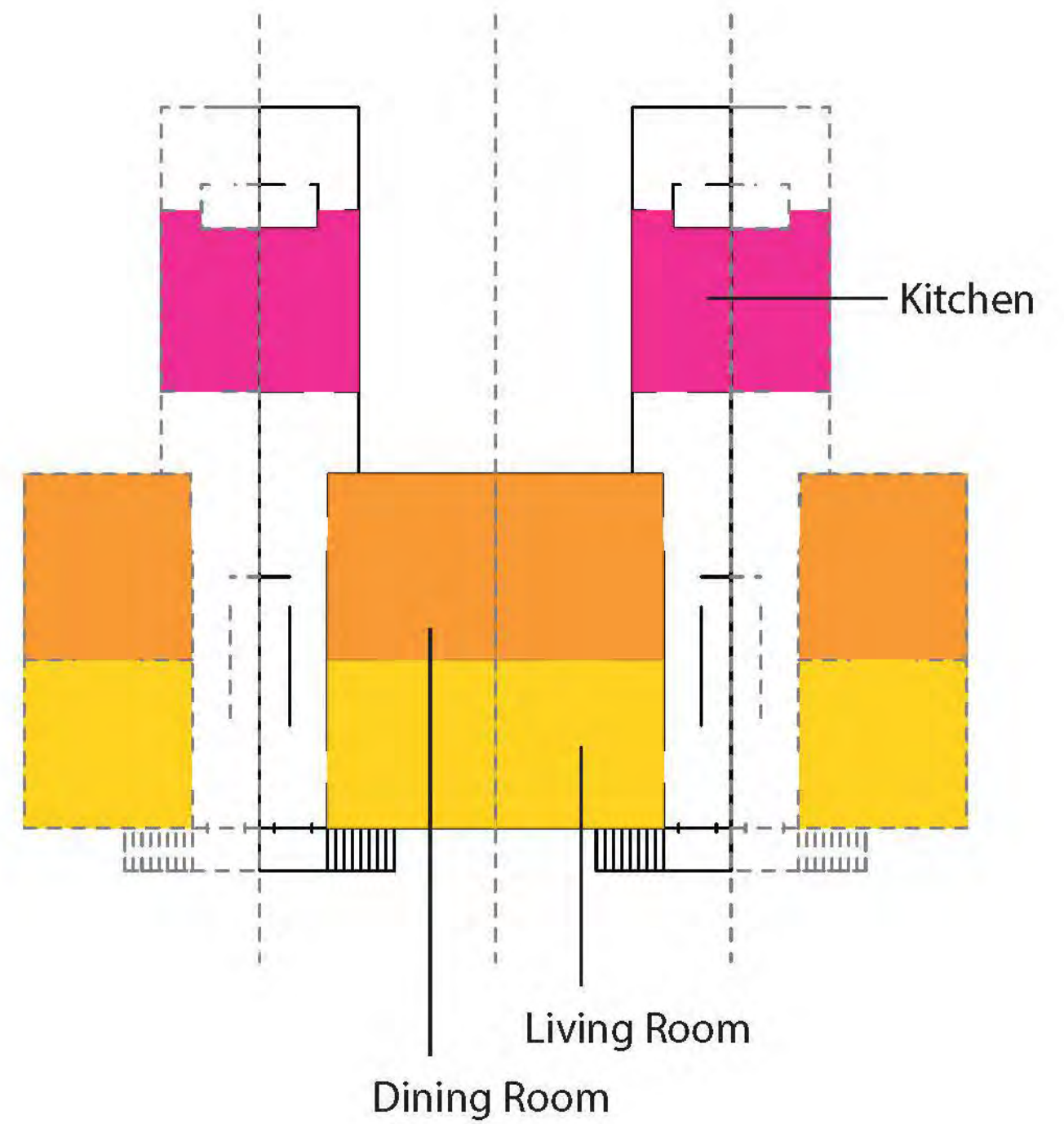
Federal

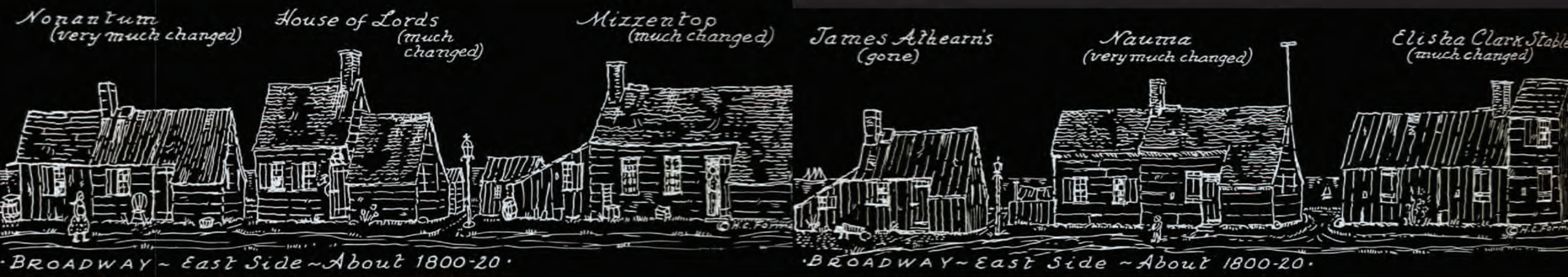


Greek Revival



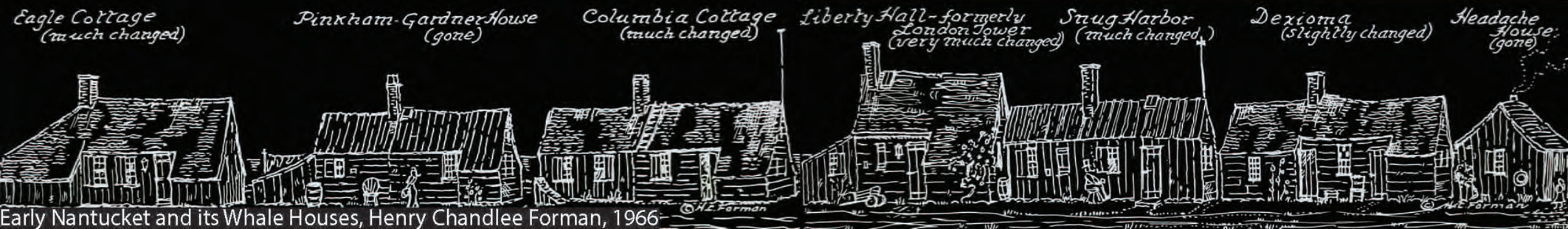
Folger Block, 1831. 15-21 Orange St.



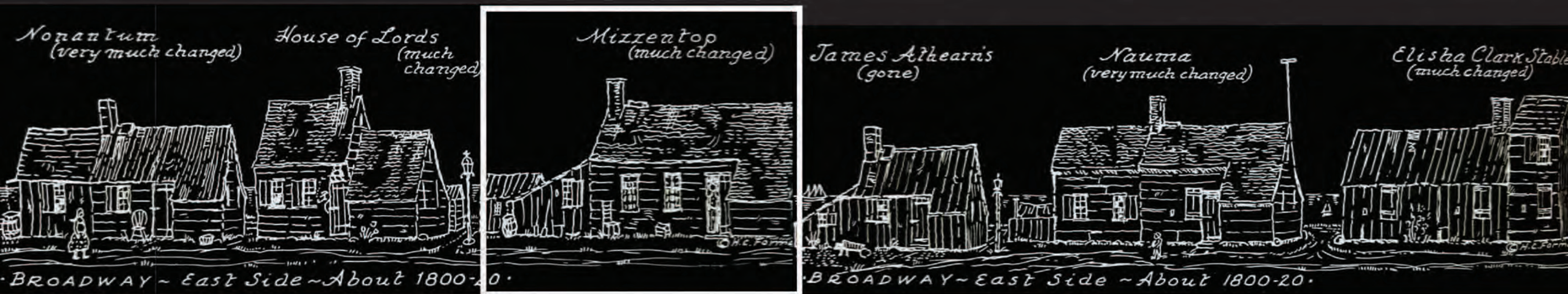


Housing Typologies of Smaller-Massed Houses

Commonly found on the outskirts of the island, Sconset, and New Guinea, these smaller homes hold historical impact as the forebearers of the large-scale housing evolution.



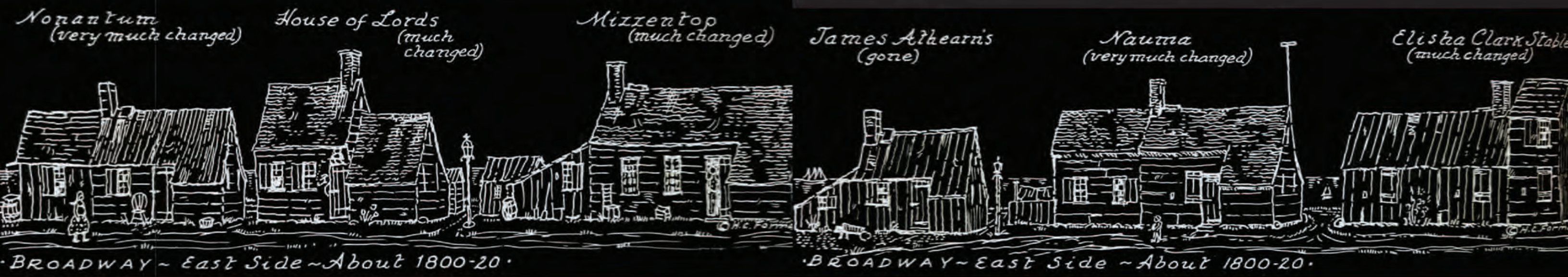
Early Nantucket and its Whale Houses, Henry Chandler Forman, 1966



Housing Typologies of Smaller-Massed Houses

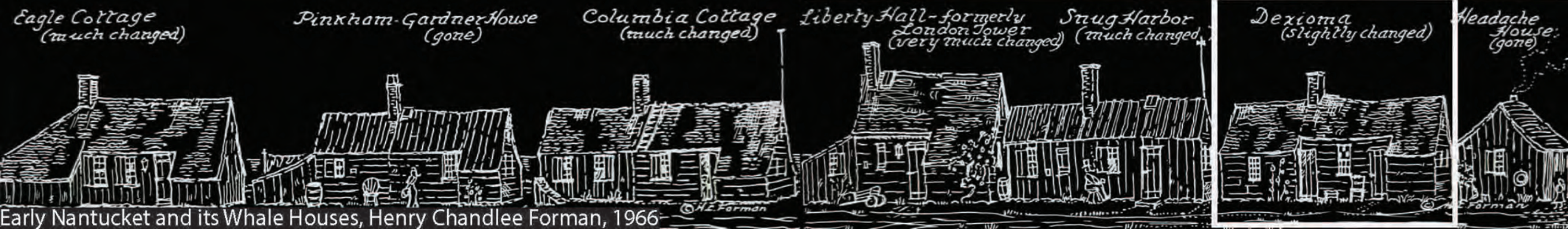
Commonly found on the outskirts of the island, Sconset, and New Guinea, these smaller homes hold historical impact as the forebearers of the large-scale housing evolution.





Housing Typologies of Smaller-Massed Houses

Commonly found on the outskirts of the island, Sconset, and New Guinea, these smaller homes hold historical impact as the forebearers of the large-scale housing evolution.





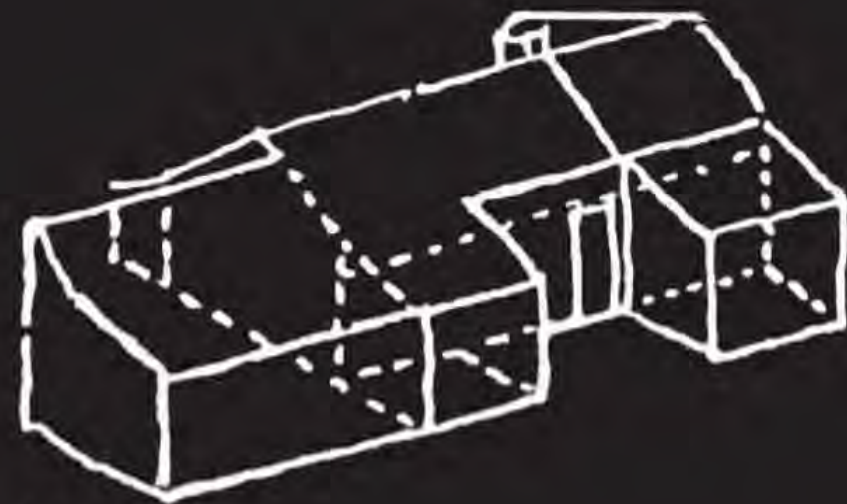
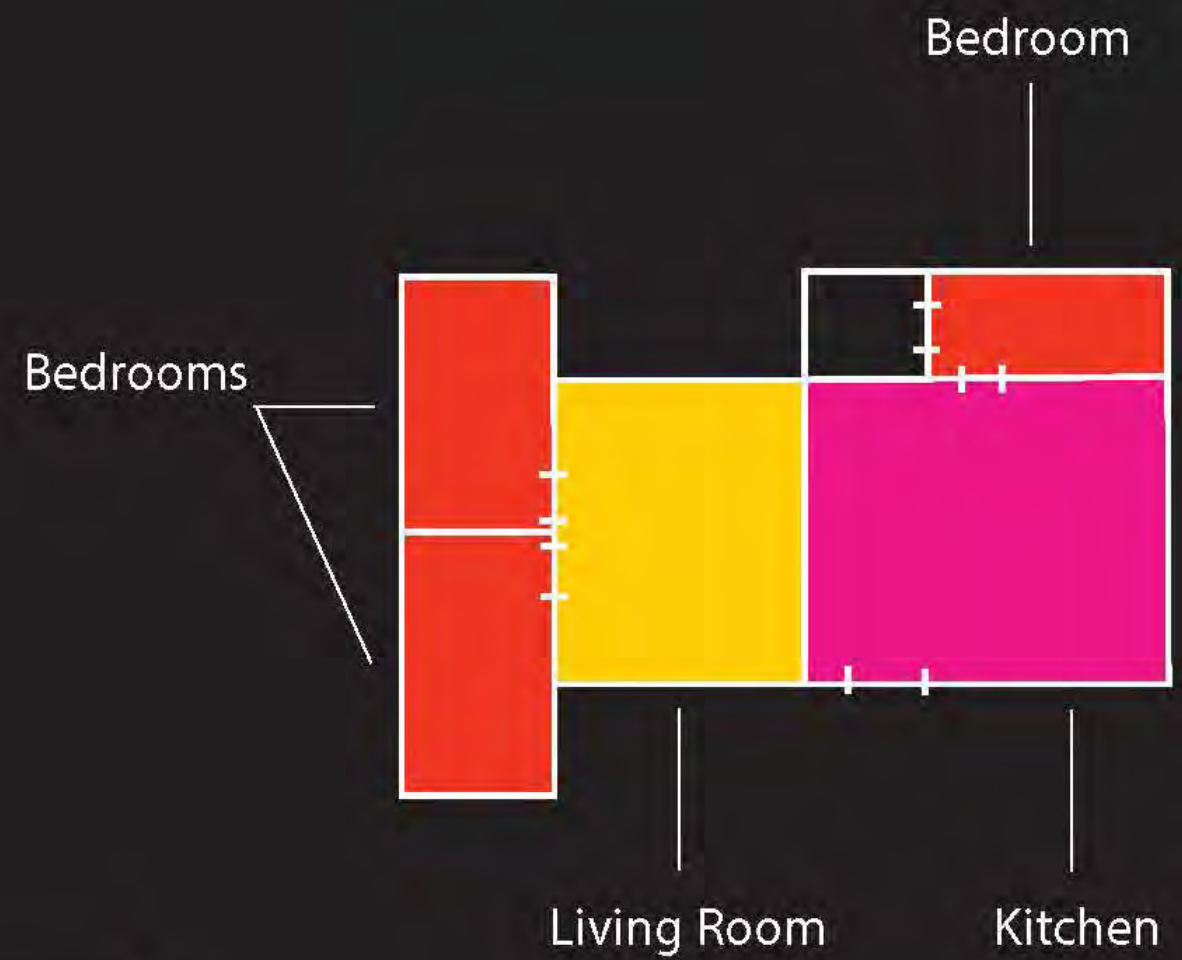
Phase I



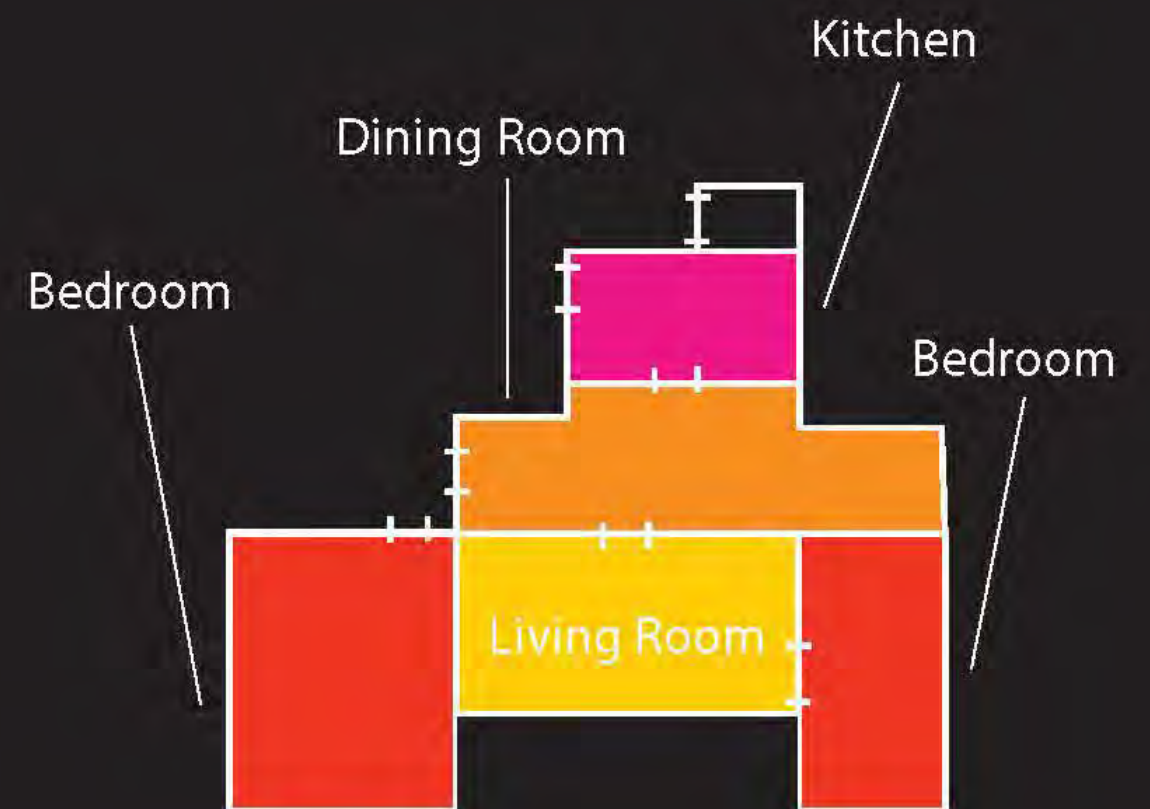
Phase II



Phase IV

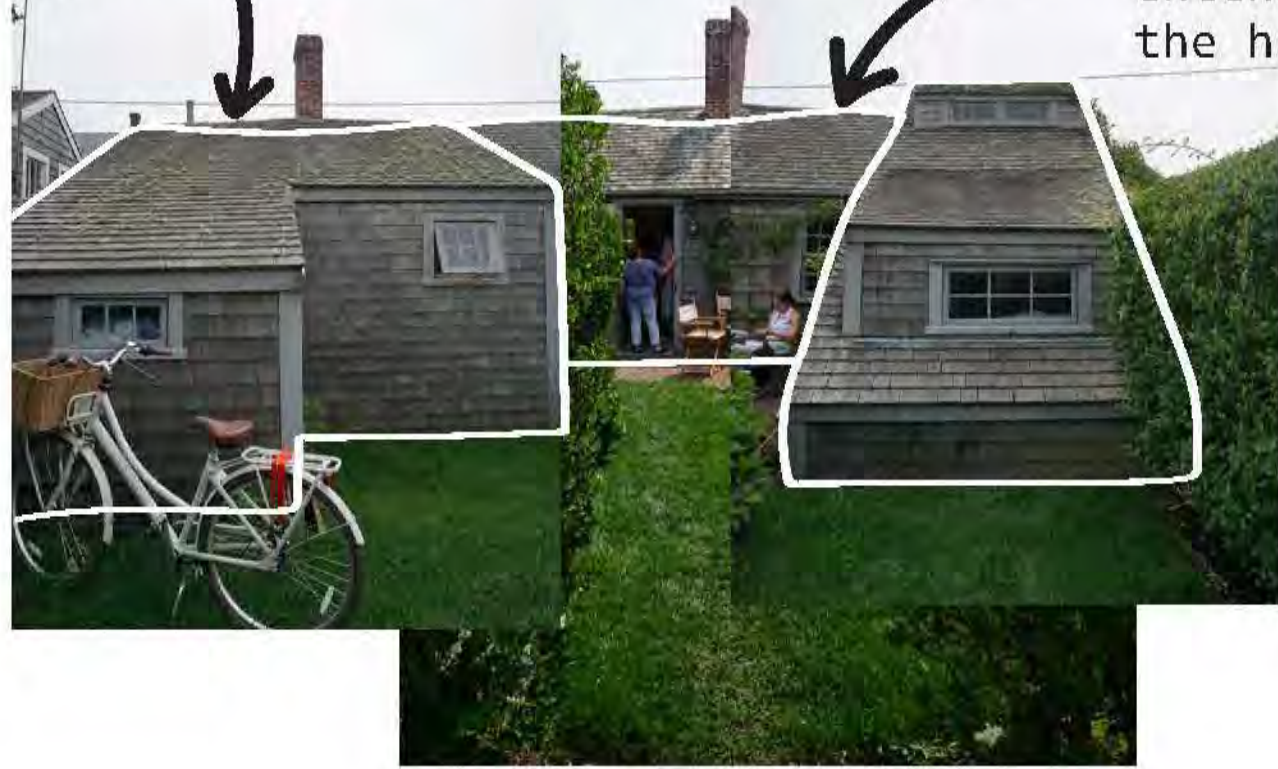


Phase V



Additions incorporated over time

Some additions are built simply for need of more reasonable space



Some additions not forms rather small extensions on the home



Units joined in property exchanges



Advancements benefit lot size

Original changed more dramatically

Some homes are evident in their original structure based on size



Clarified additions include hyphens - at some point may have been their own addition

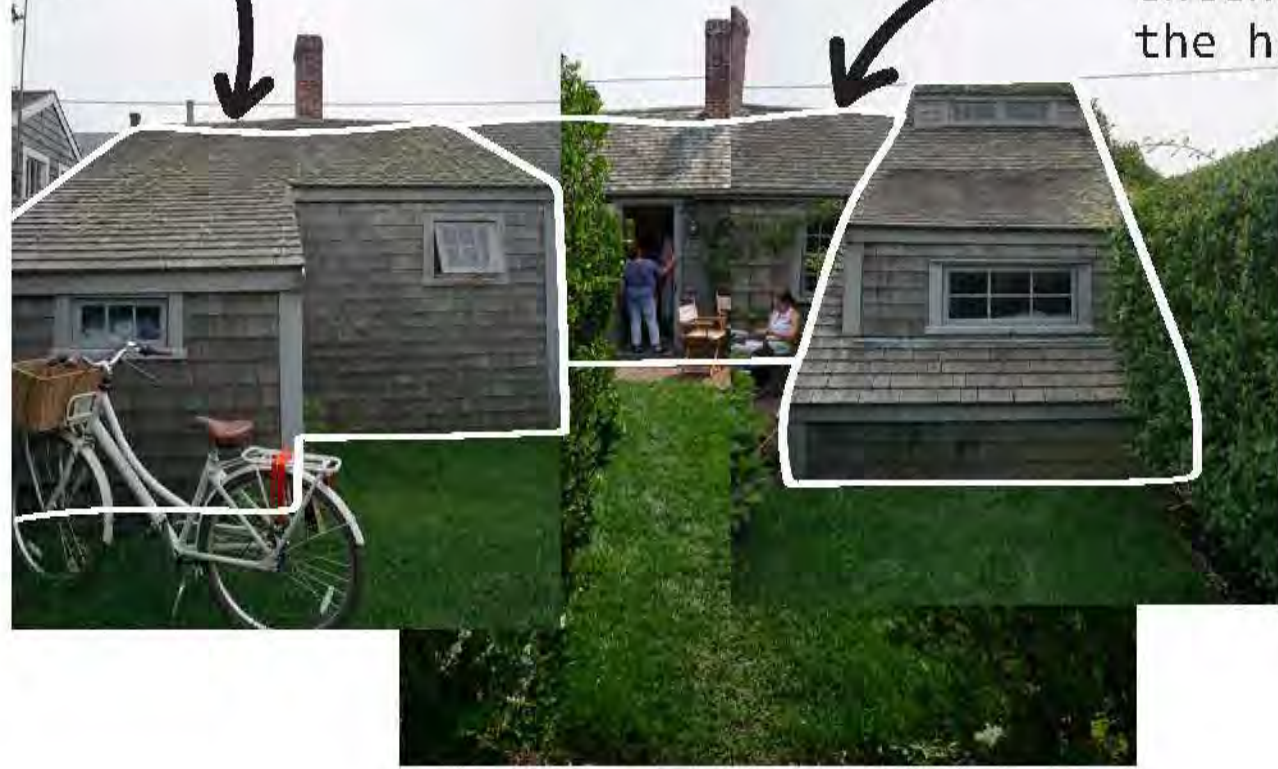
Jumble of additions through pure need



Smaller homes go through less change

Additions incorporated over time

Some additions are built simply for need of more reasonable space



Some additions not forms rather small extensions on the home



Units joined in property exchanges



Advancements benefit lot size

Original changed more dramatically

Some homes are evident in their original structure based on size



Clarified additions include hyphens - at some point may have been their own addition

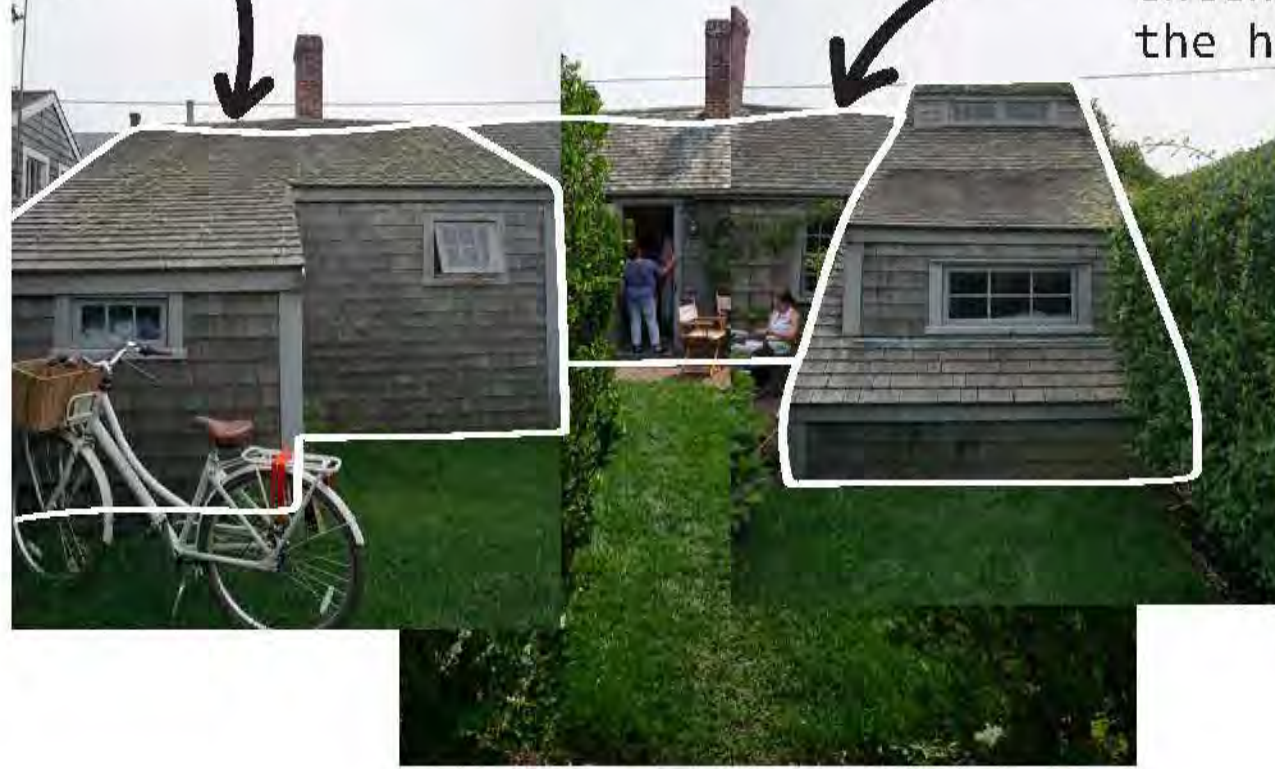
Jumble of additions through pure need



Smaller homes go through less change

Additions incorporated over time

Some additions are built simply for need of more reasonable space



Some additions not forms rather small extensions on the home



Units joined in property exchanges



Advancements benefit lot of

Original changed more dramatically

Some homes are evident in their original structure based on size



Clarified additions include hyphens - at some point may have been their own addition

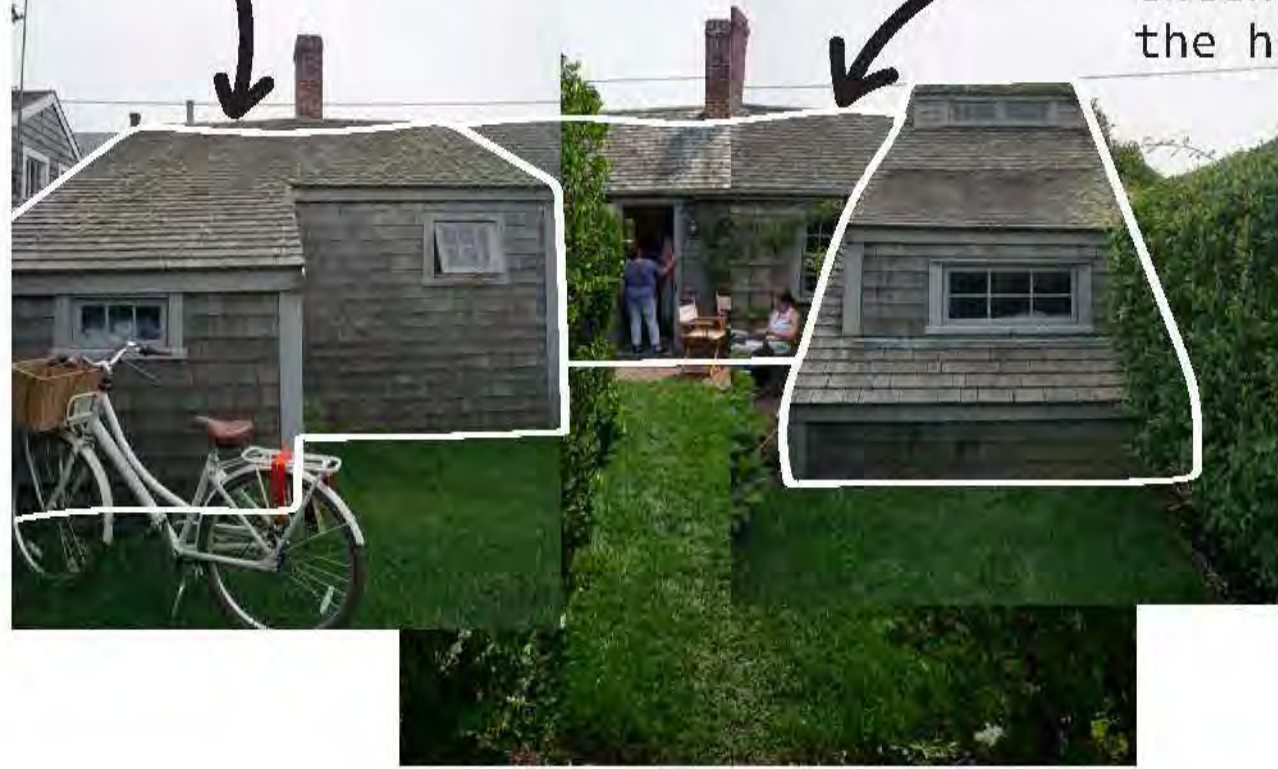
Jumble of additions through pure need



Smaller homes go through less change

Additions incorporated over time

Some additions are built simply for need of more reasonable space



Some additions not forms rather small extensions on the home



Units joined in property exchanges



Advancements benefit lot size

Original changed more dramatically

Some homes are evident in their original structure based on size

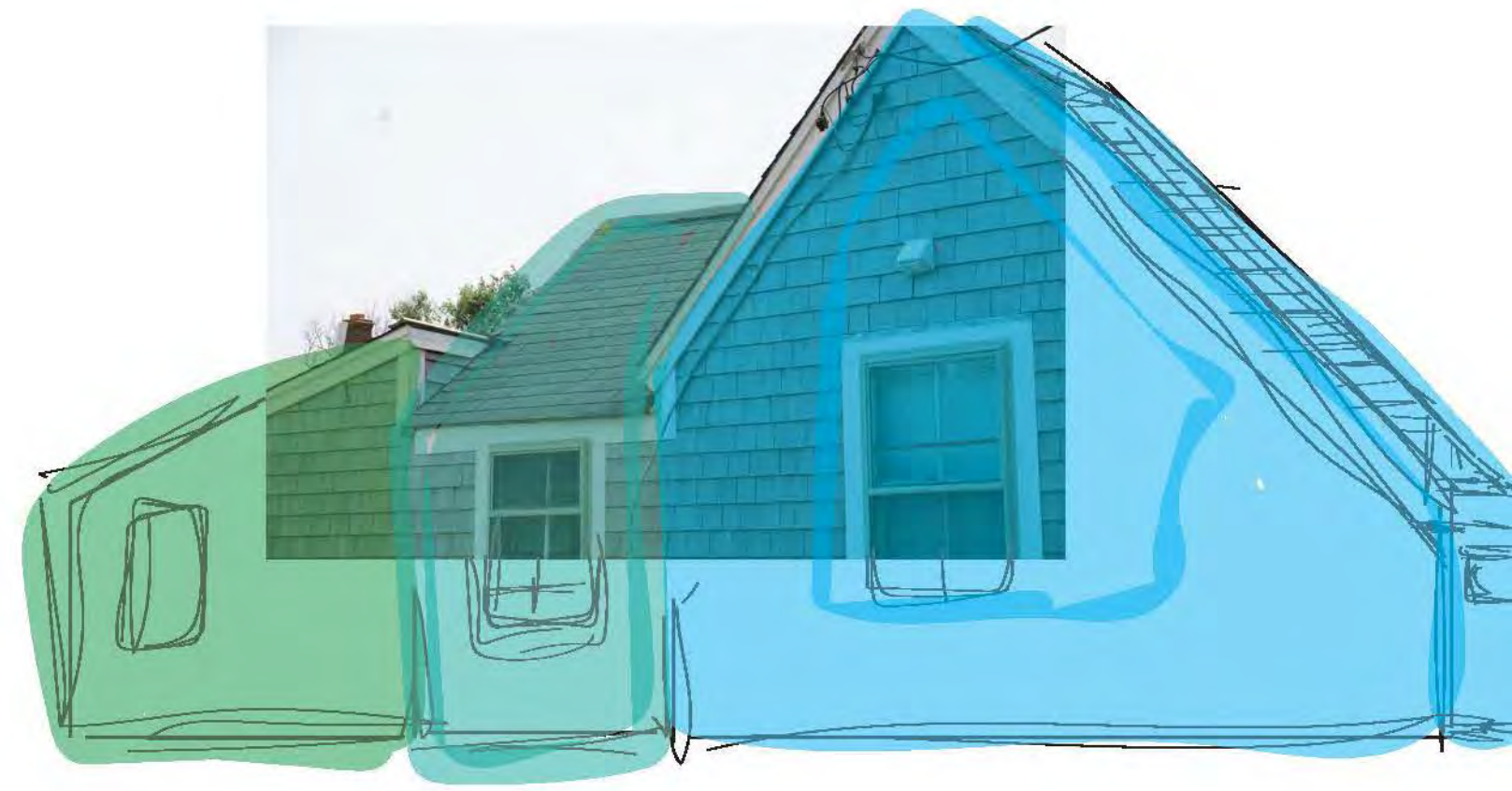
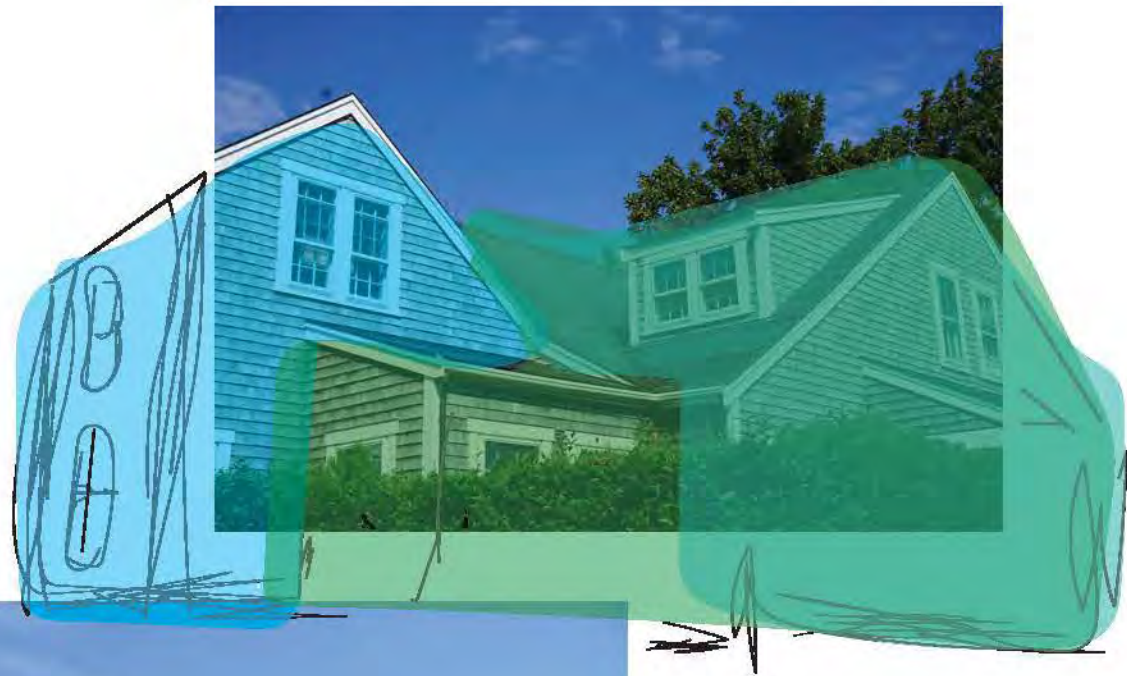





Jumble of additions through pure need



Smaller homes go through less change

Clarified additions include hyphens - at some point may have been their own addition



-  - Original House
-  - Undetermined
-  - Addition



Whats next?

The future of Nantucket design will have to consider 4 main factors:

Familiarity

Natural Resistance

Occupancy

Available Space

Familiarity

- Similar form, material, order
- Unfamiliar is not comforting
- Applies to all surroundings, not only homes



Natural Resistance

- Coastal erosion
- Fire resistance
- Need sustainable/substitute materials
- Relocation



Occupancy

- 64% of housing is seasonal
- Population increase of 14% since 2000
- Dire need for seasonal and workforce housing



Available Space

- Spatial organization is familiarity
- Preserve natural scenescape
- Lower profile, better organization



Diagram A

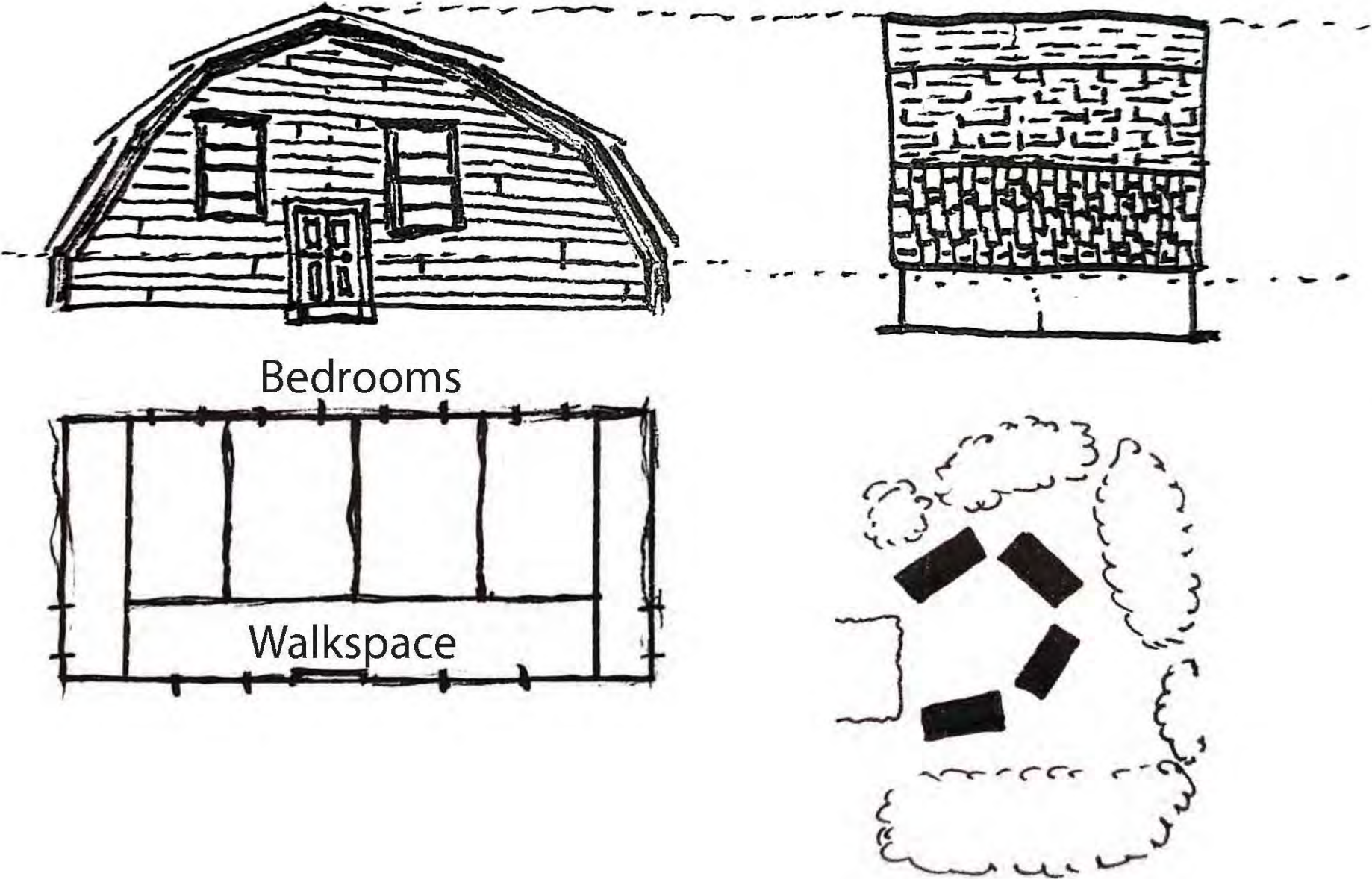


Diagram B

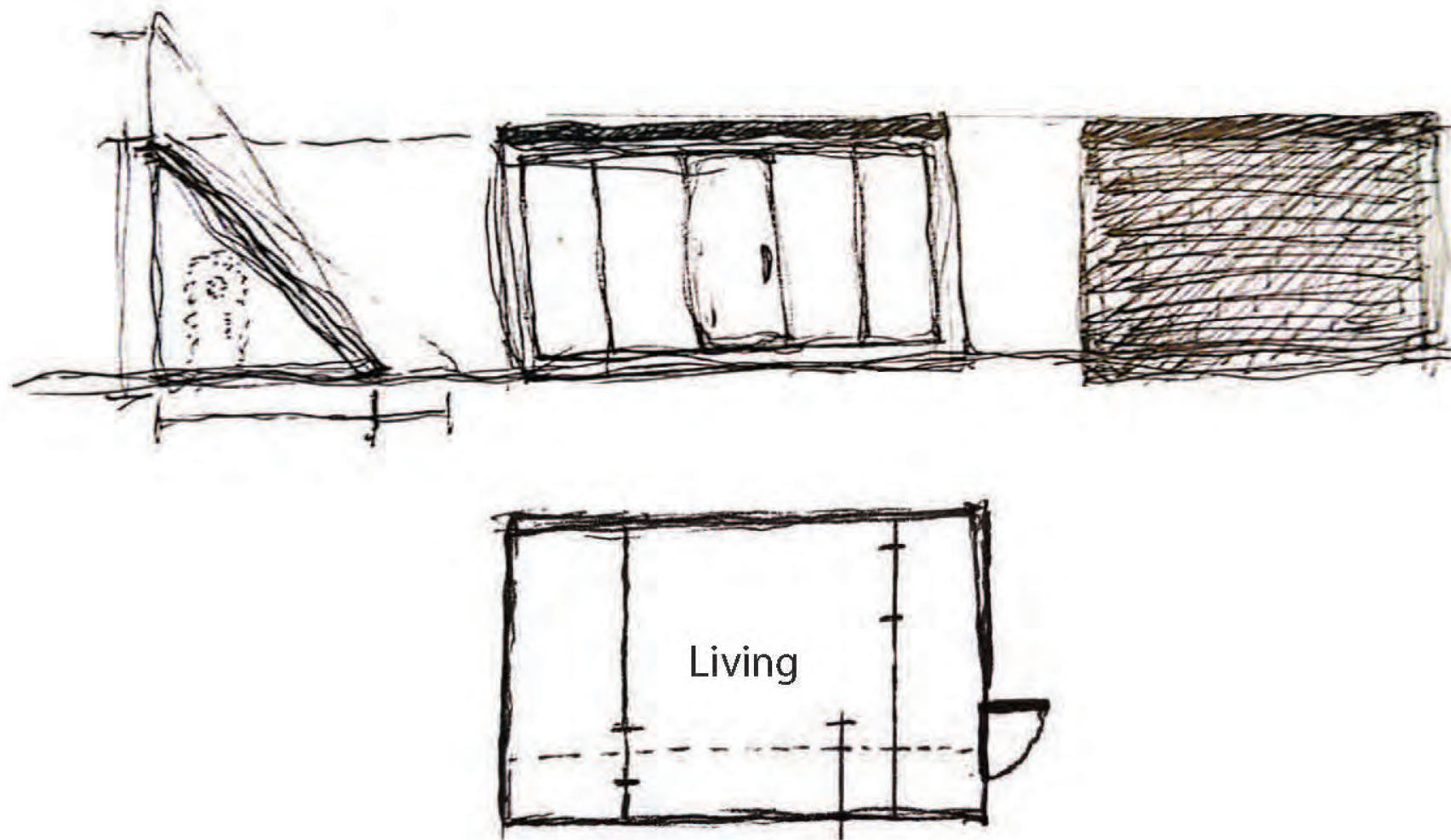


Diagram C

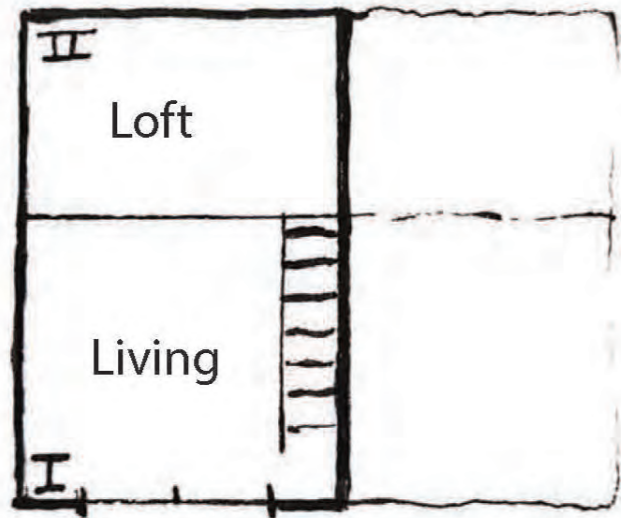
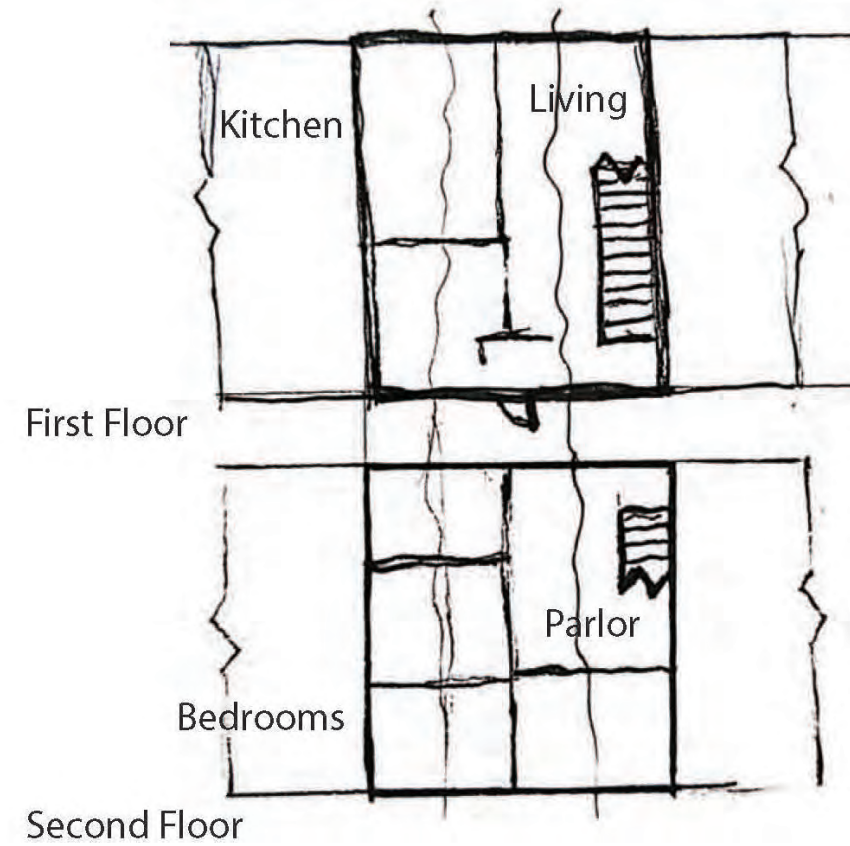
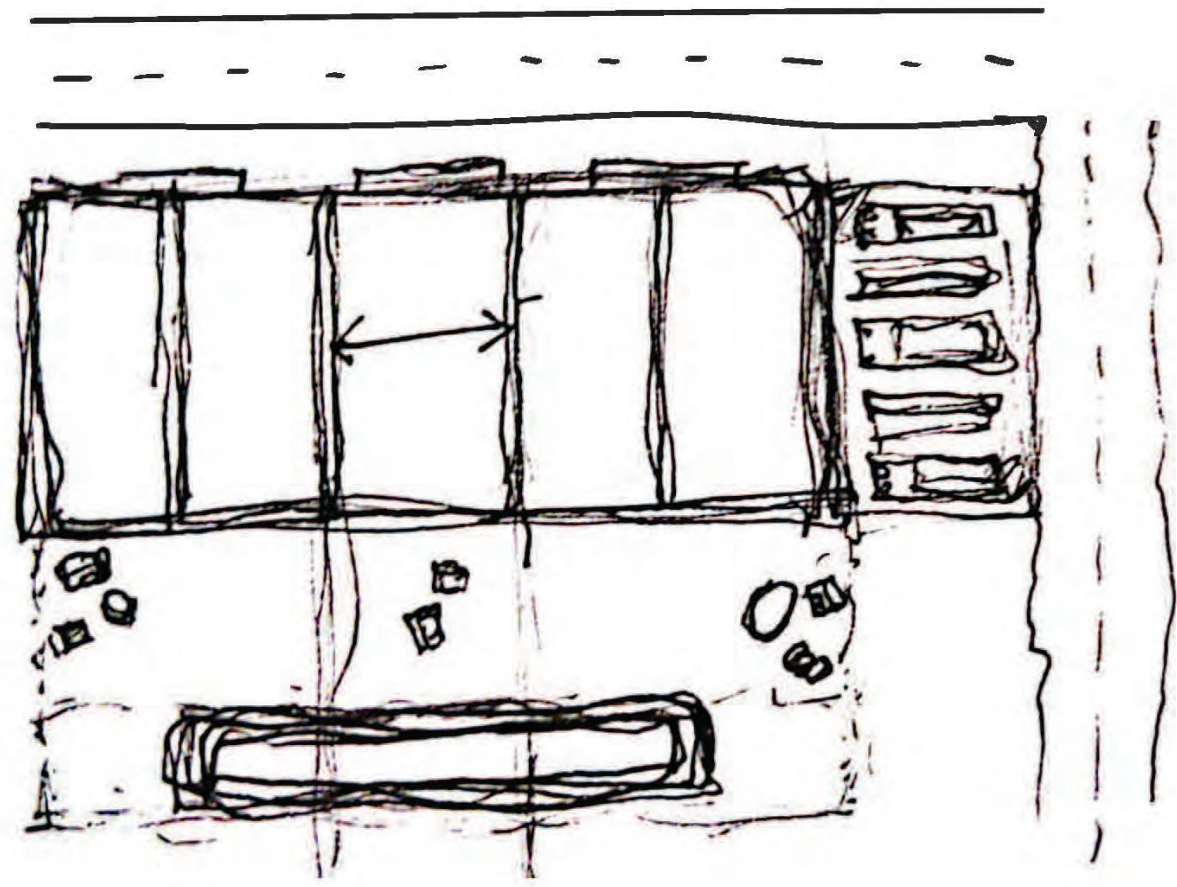
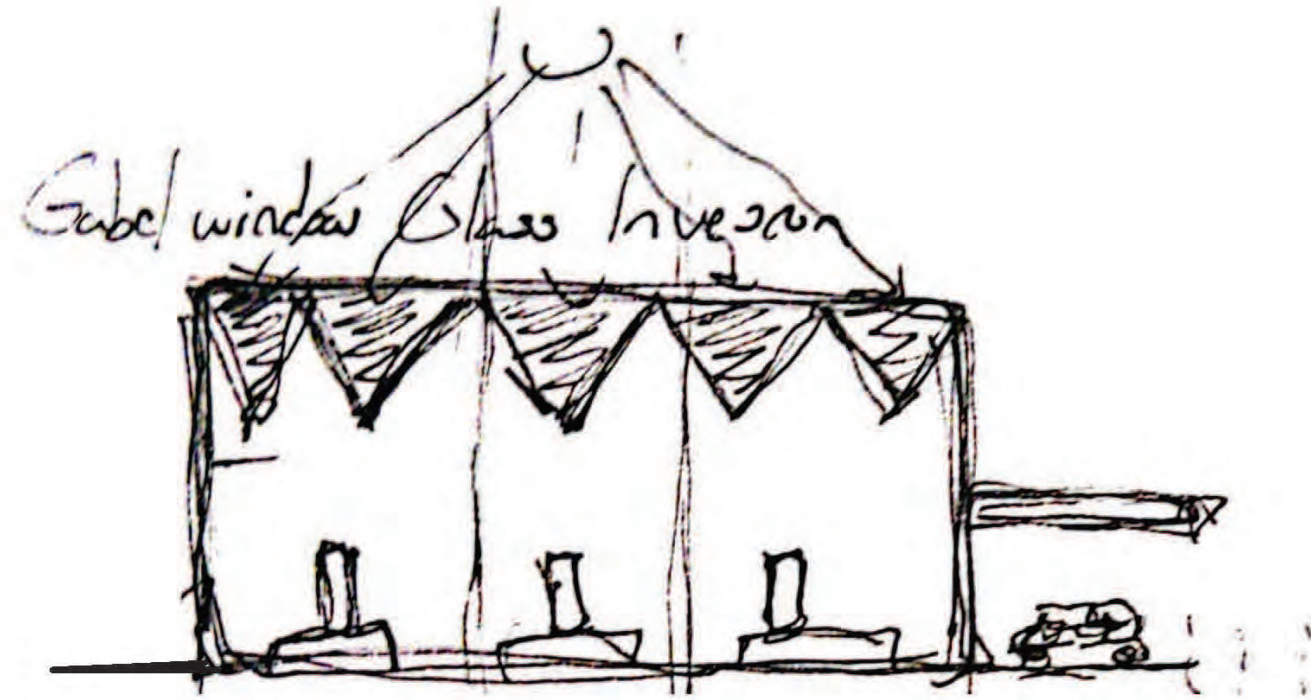


Diagram D





VVYER