



designexplorationprogram



LEARN THROUGH MAKING.

The design studio is the heart of the program. Students learn through the making of hand drawings, digital drawings, collages, and physical models. Students learn to communicate their design ideas in an open and constructive environment.

UF SOA Summer Design Exploration Program

University of Florida School of Architecture Sunday,
June 14, 2026- Friday July 3, 2026

MISSION

The primary initiative of the University of Florida's Design Exploration Program (DEP) is to offer both valuable insight and first-hand experience to prospective architecture design students. The program aims to immerse participants in an architectural educational environment that introduces students to core aspects of the university's design curriculum as well as to essential architectural principles in general. A greater understanding of both the architectural curriculum and environment at the University of Florida is achieved through the construction of studio design projects which equips students with hands-on experience with the design process, program activities which serve to foster a sense of community and enhance teamwork among participants, and field trips which aim to broaden the scope of architectural theories, methods, and principles discussed during the program.

DESIGN STUDIO

An intensive design studio directed by UF School of Architecture faculty is the heart of the DEP experience. A low instructor / student ratio ensures personal attention. In studio, participants develop projects involving various phases of architectural design development and presentation. Basic design exercises such as drawing, model building and investigations of architectural concepts and constructions compliment the studio projects.

SEMINARS

Seminars covering various aspects of design and building also form an important part of the program. Formatted as lectures and group discussions, they are led by guest professors in the morning and evening hours. Varied issues such as design processes and methods, architectural history and theory, model making techniques, use of photography as a medium of architectural documentation and the role of computer / digital technology in contemporary architectural practices are presented.

FIELD TRIPS

Field trips provide participants with exposure to important works of architecture from Florida's past and present. Through on-site visits to architectural offices, buildings under construction and architecturally significant sites, participants learn about design, building and the architectural profession.

RESIDENCE HALL

DEP participants live in the dormitory suites conveniently located near the College of Design, Construction and Planning on the UF campus. Accommodations have kitchen facilities, 2-person bedrooms in suites with shared baths, coin operated laundry facilities, student lounges and recreation areas where participants can relax and socialize during free time. Our in-house counselors will reside in the dorm and provide round the clock supervision.

FOOD & ETC.

Meals and miscellaneous expenses are not included in the program cost. Students should allocate a budget if they intend to prepare their own meals, a Publix grocery store and CVS market are within walking distance of the dormitory. Participants may bring food and a small dormitory refrigerator from home. There are a variety of affordable restaurants within walking distance from the university.

Participants are responsible for their own laundry and coin-operated facilities are conveniently located in the residence hall.

PROGRAM FEE

The \$3200 program fee for the Design Exploration Program covers the program's three weeks of instruction, studio supplies and materials, on-campus housing, and all travel expenses.

FINANCIAL AID

Participants with a genuine need for financial aid must include a separate letter in their application packet explaining their request. DEP faculty will evaluate the applicants financial aid request and determine the participant's eligibility. Scholarship decisions will be determined on the basis of the overall strength of the materials in the individual's application packet. Please note scholarships for participants in need of financial aid are available on a limited basis.

APPLICATION PROCESS

Program dates are June 14, 2026 to July 3, 2026. The deadline for all application materials is May 15, 2026.

To apply for participation in the program, please submit the following materials to the UF School of Architecture.

- Completed DEP application form
- Current copy of your academic transcripts from your current high school
- Personal statement (1 or 2 pages in length) describing how your creative and intellectual interests will benefit from attending DEP.
- Optional Letter of Recommendation
- <https://conferences.aa.ufl.edu/upcoming-events/>
- Register on-line (\$25 non-refundable application fee)

Send Completed Application Packets to:

Design Exploration Program UF
School of Architecture
PO Box 115702
Gainesville, FL 32611-5702

For More Information Contact:

Prof. Jason Alread via email at jalread@ufl.edu
or Assistant Program Coordinator Shaunteal Christian at christian.sh1@ufl.edu

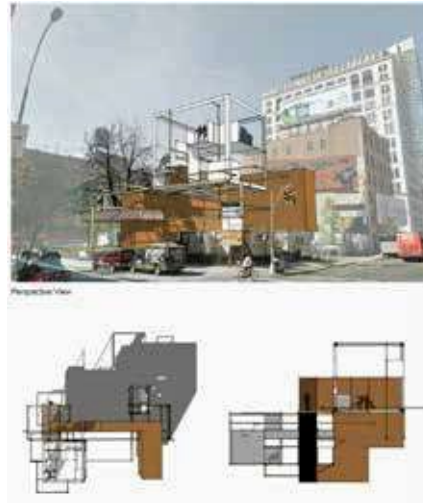
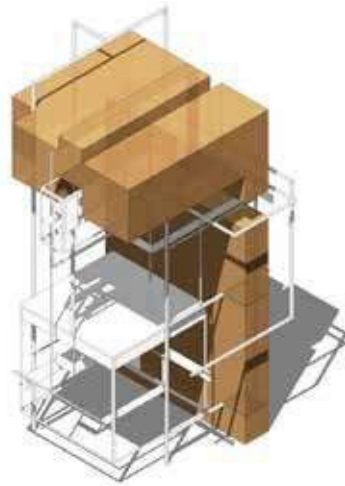
Nancy Clark,
Interim Director
University of Florida School of Architecture
nmclark@ufl.edu
352-294-1456

Those with communication disabilities can contact UF through the Florida Relay Service (FRS), a free service facilitating communication through telecommunication devices for the deaf (TDD), by calling 1-800-955-8770 (voice) or 1-800-955-8771 .



Students learn fundamental languages of design thinking as they shape spatial relationships and develop design proposals. The collaborative studio environment allows for students to learn from one another and to quickly develop a range of skills.

DEVELOP DESIGN SKILLS.







While the studio is a critical part of the program, students also have opportunities to get out of the studio on structured field trips and recreational outings. Travel and visit exceptional examples of both contemporary and historical architecture. Visit and meet architects engaged in the contemporary practice of architecture. Enjoy some of North Florida's exceptional landscapes.



ENJOY.



School of Architecture
College of Design, Construction and Planning
University of Florida
231 Architecture Building / PO Box 115702
Gainesville
Florida 32611-5702 USA
<https://dcp.ufl.edu/architecture/>