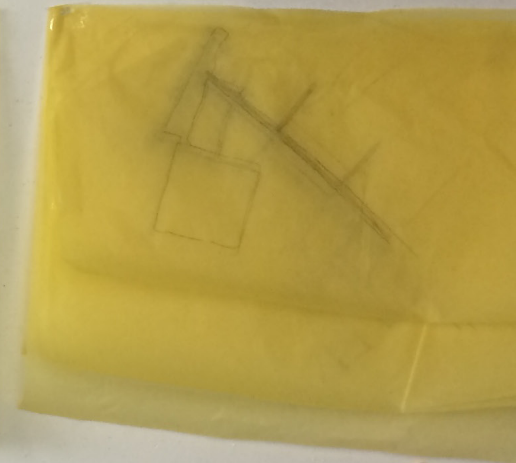
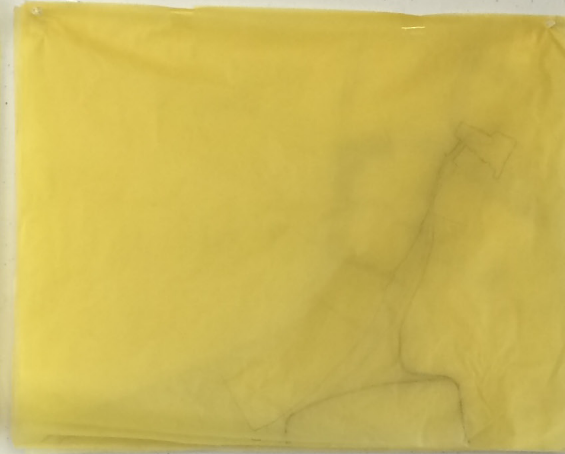
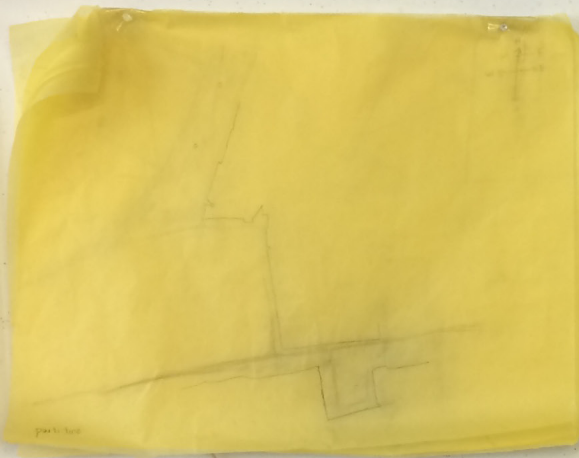
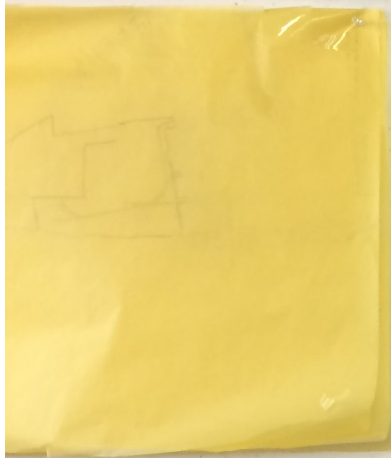
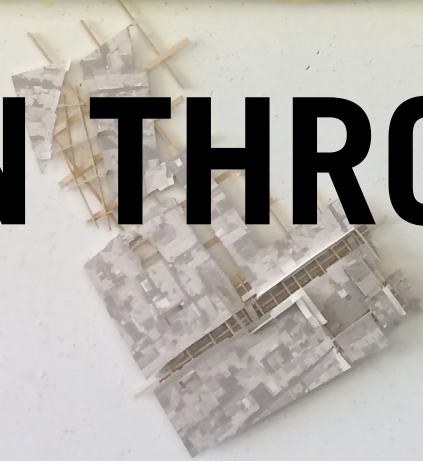




design exploration program



# LEARN THROUGH MAKING.



The design studio is the heart of the program. Students learn through the making of hand drawings, digital drawings, collages, and physical models. Students learn to communicate their design ideas in an open and constructive environment.

# DESIGN EXPLORATION PROGRAM

UNIVERSITY OF FLORIDA // SCHOOL OF ARCHITECTURE

22 JUNE - 3 JULY 2020

## MISSION

The primary initiative of the University of Florida's Design Exploration Program (DEP) is to offer both valuable insight and first-hand experience to prospective architecture design students. The program aims to immerse participants in an architectural educational environment that introduces students to core aspects of the university's design curriculum as well as to essential architectural principles in general. A greater understanding of both the architectural curriculum and environment at the University of Florida is achieved through the construction of studio design projects which equips students with hands-on experience with the design process, program activities which serve to foster a sense of community and enhance teamwork among participants, and field trips which aim to broaden the scope of architectural theories, methods, and principles discussed during the program.

## DISTANCE LEARNING

In response to the ongoing Coronavirus Pandemic, we have migrated the summer program onto an online format. Participants will meet with Faculty and Graduate Teaching assistants, and other students twice daily in a virtual classroom. In addition, students will be mailed a packet of material and tools to allow them to complete the physical modeling and drawing exercises from home. This is a new format for us, but it closely mirrors the summer studios here at University of Florida.

## DESIGN STUDIO

An intensive design studio directed by UF School of Architecture faculty is the heart of the DEP experience. A low instructor / student ratio ensures personal attention. In studio, participants develop projects involving various phases of architectural design development and presentation. Basic design exercises such as drawing, model building and investigations of architectural concepts and constructions compliment the studio projects.

## SEMINARS

Seminars covering various aspects of design and building also form an important part of the program. Formatted as lectures and group discussions, they are led by guest professors in the morning and evening hours. Varied issues such as design processes and methods, architectural history and theory, model making techniques, use of photography as a medium of architectural documentation and the role of computer / digital technology in contemporary architectural practices are presented.

## FIELD TRIPS

Field trips provide participants with exposure to important works of architecture from Florida's past and present. Through virtual and video visits to architectural offices, fabrication shops, buildings under construction and architecturally significant sites, participants learn about design, building and the architectural profession.

## PROGRAM FEES

The \$500 program fee for the Design Exploration Program covers the program's two weeks of instruction, access to the digital classroom, and studio supplies.

## FINANCIAL AID

Scholarships for participants in need of financial aid are available on a limited basis. Those with a genuine need for financial aid must include a separate letter in their application packets explaining their request and indicating how much of the fee they can afford to pay. DEP faculty will evaluate applicants requesting financial aid to determine if a scholarship will be offered. Financial aid decisions will be determined on the basis of the overall strength of the materials in the individual's application packet.

## APPLICATION PROCESS

Program dates are June 22, 2020 – July 3, 2020, Excepting weekends. The deadline for all application materials is June 8, 2020. To apply for participation in the program, please submit the following materials to the UF School of Architecture:

- Completed DEP application form
- Current copy of your academic transcript from your school
- Personal statement [one or two pages in length] describing how your creative and intellectual interests will benefit from and contribute to participation in DEP
- Optional letter of recommendation

Send completed application packets to:

Design Exploration Program  
Lisa Haynes  
lhaynes67@dcp.ufl.edu

## FOR MORE INFORMATION, CONTACT:

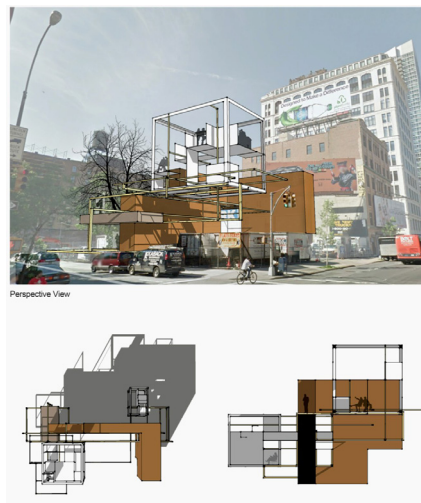
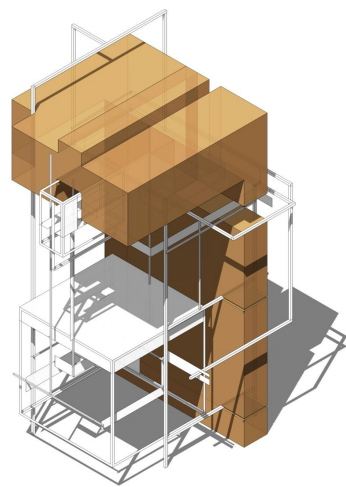
Lisa Haynes,  
Administrative Support Assistant  
lhaynes67@dcp.ufl.edu  
352.294.1454

Jason Alread, AIA, LEED AP  
Professor, University of  
Florida School of Architecture  
jalread@ufl.edu  
352.294.1456

Those with communication disabilities can contact UF through the Florida Relay Service (FRS), a free service facilitating communication through telecommunication devices for the deaf (TDD), by calling 1-800-955-8770 (voice) or 1-800-955-8771 (TDD).



# DEVELOP DESIGN SKILLS.





# EXPLORE.

Students learn fundamental languages of design thinking as they shape spatial relationships and develop design proposals. The collaborative studio environment allows for students to learn from one another and to quickly develop a range of skills.

**UF** | UNIVERSITY *of*  
**FLORIDA**  
*The Foundation for The Gator Nation*

SoA

School of Architecture  
College of Design, Construction and Planning  
University of Florida  
231 Architecture Building / PO Box 115702  
Gainesville  
Florida 32611-5702 USA  
<http://soa.dcp.ufl.edu/>